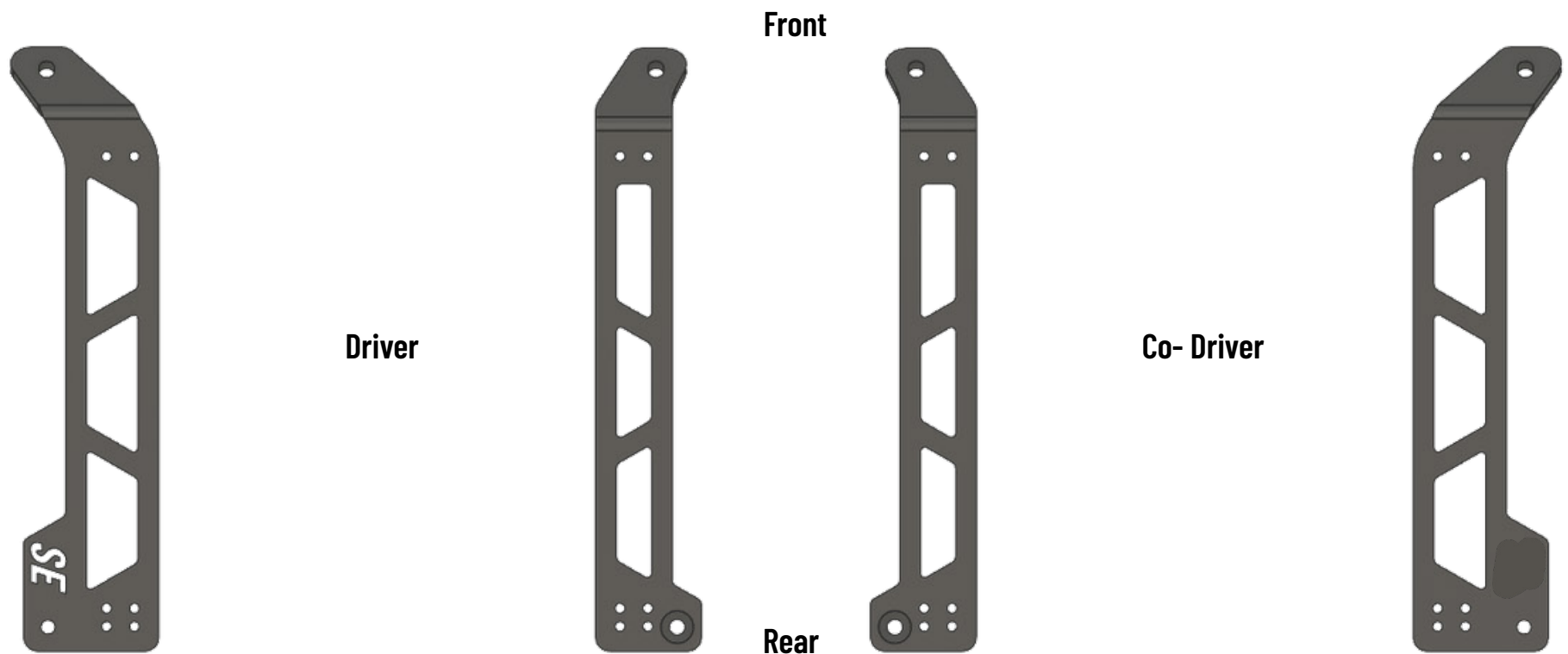




## Honda Civic FK8 Seat Mount Kit Manual



***\*\*Aufgrund konstruktiver Änderungen ist das Bauteil 13337 Unterlegscheibe nicht mehr notwendig.***

***\*\*Due to design changes, the component 13337 washer is no longer required.***

This product is designed and produced by the SPEED Engineering GmbH.

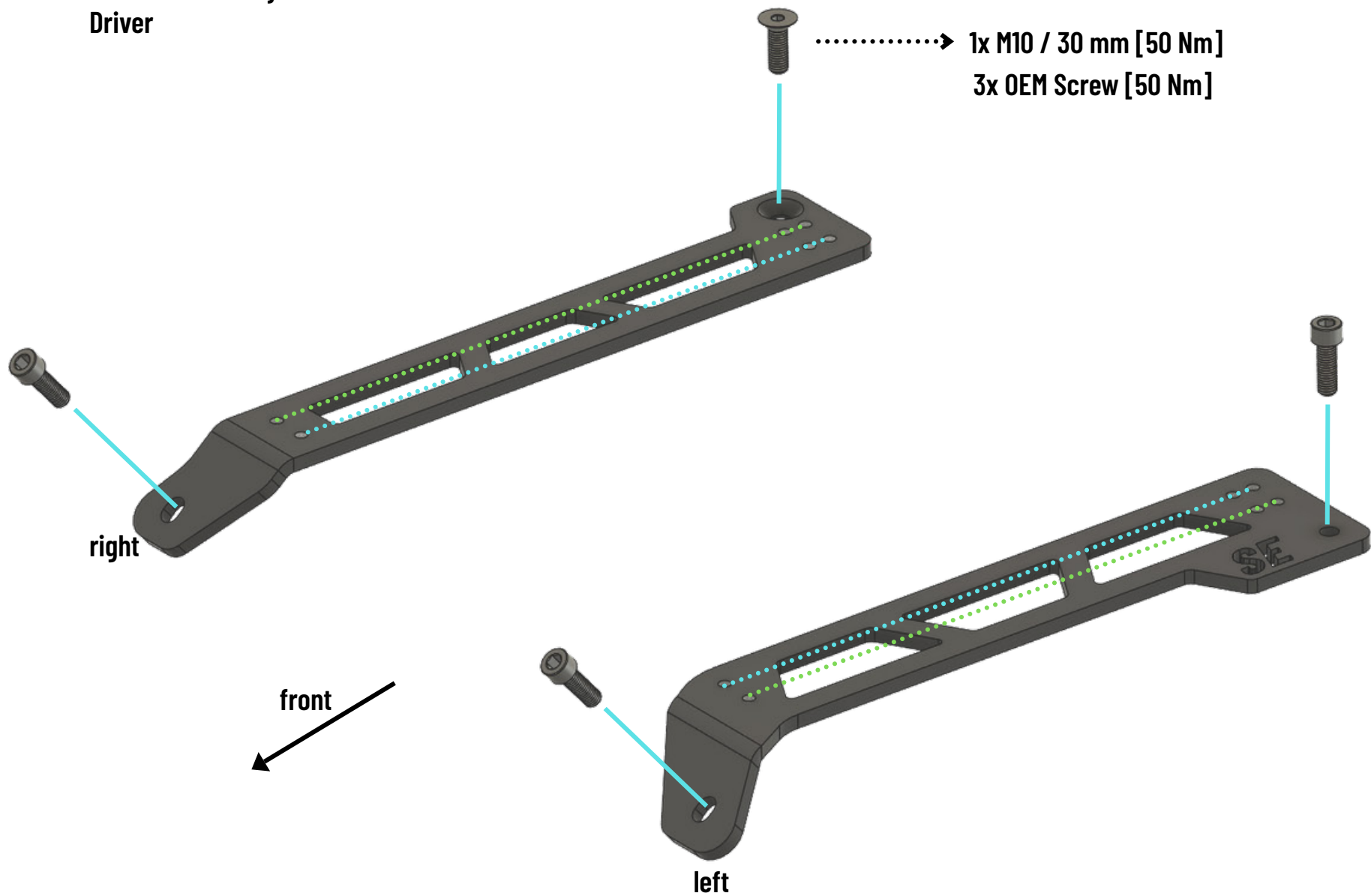
If you have any questions or comments,

please feel free to contact us.

[www.speedengineering.de](http://www.speedengineering.de)

## STEP 1

Console assembly  
Driver



Use inner thread holes for the assembly of smaller seats like

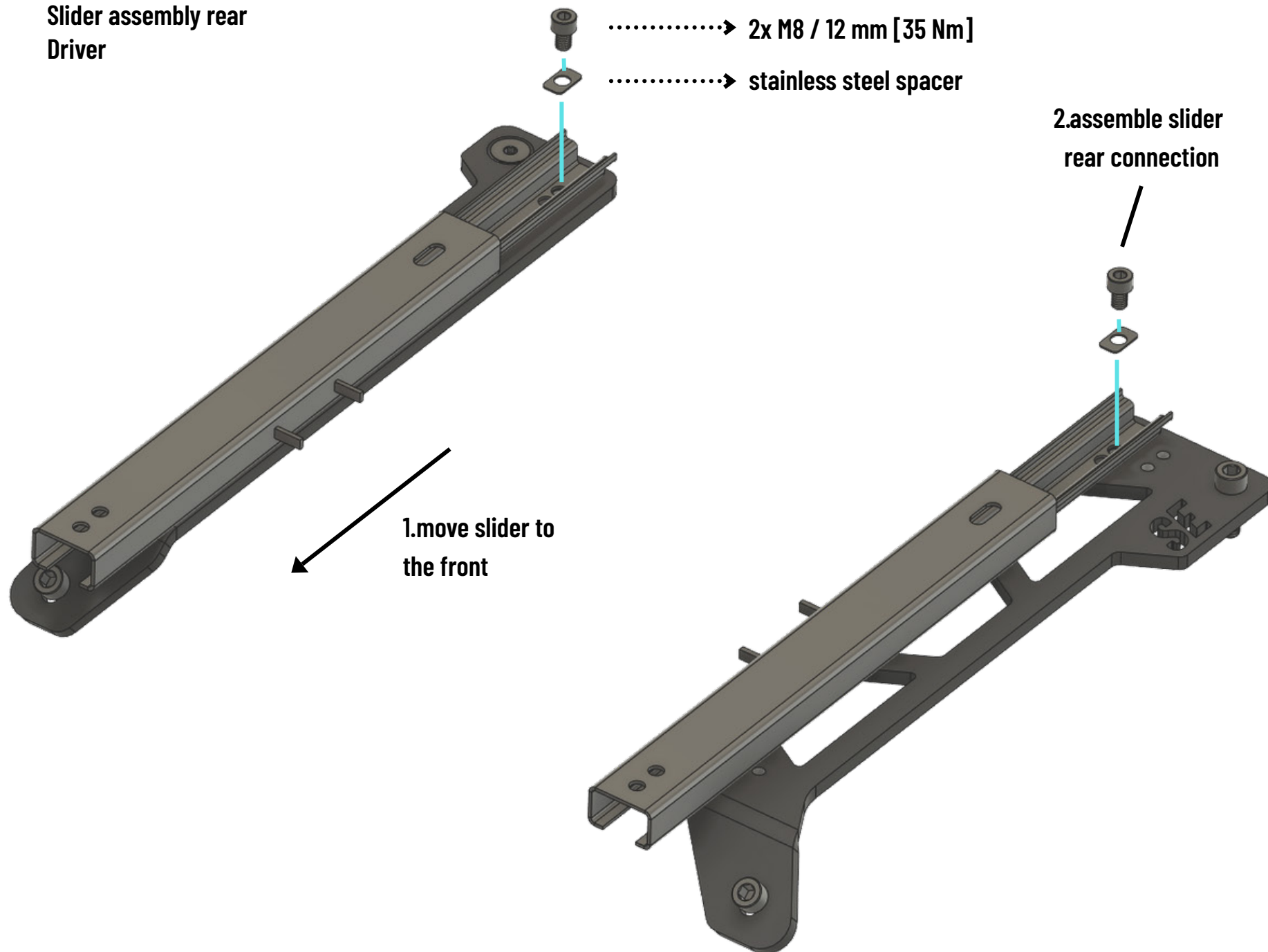
Recaro SPG  
Sparco REV  
Sparco Sprint

Use outer thread holes for the assembly of larger seats like

Recaro Pole Position  
Sparco Pro 2000  
Sparco Evo L

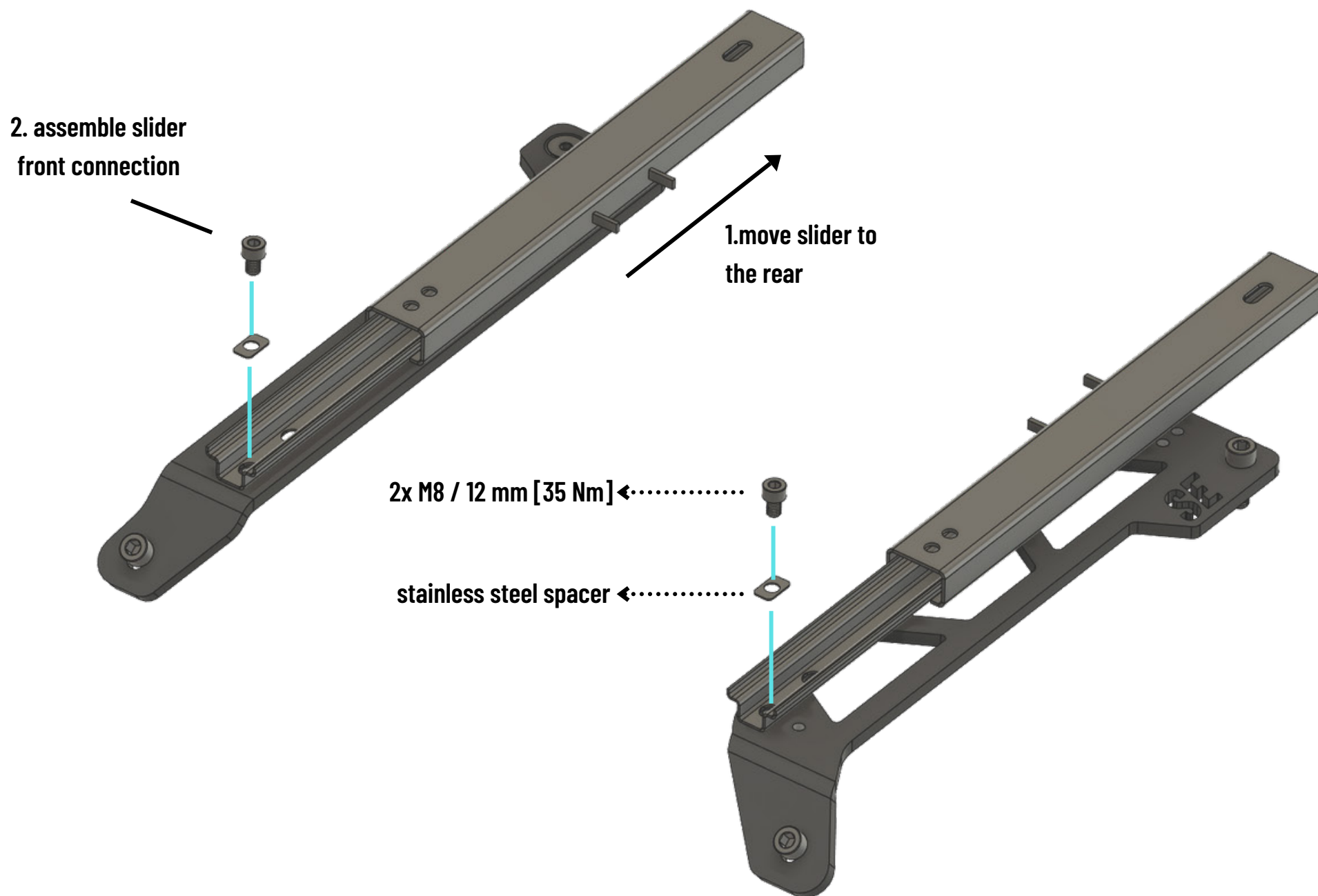
**STEP 2**

Slider assembly rear  
Driver



**STEP 3**

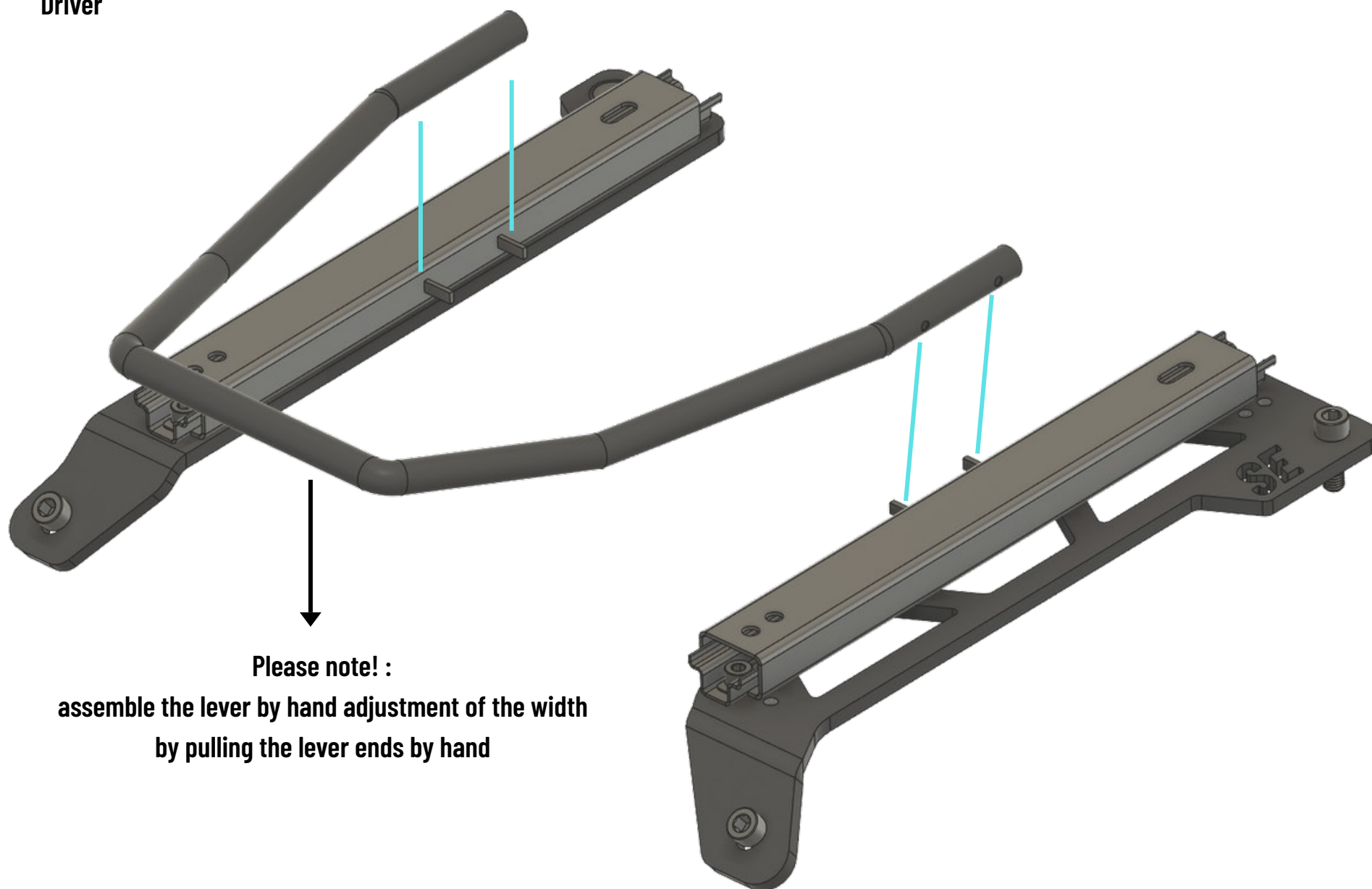
**Slider assembly front**



**STEP 4**

Slider lever assembly

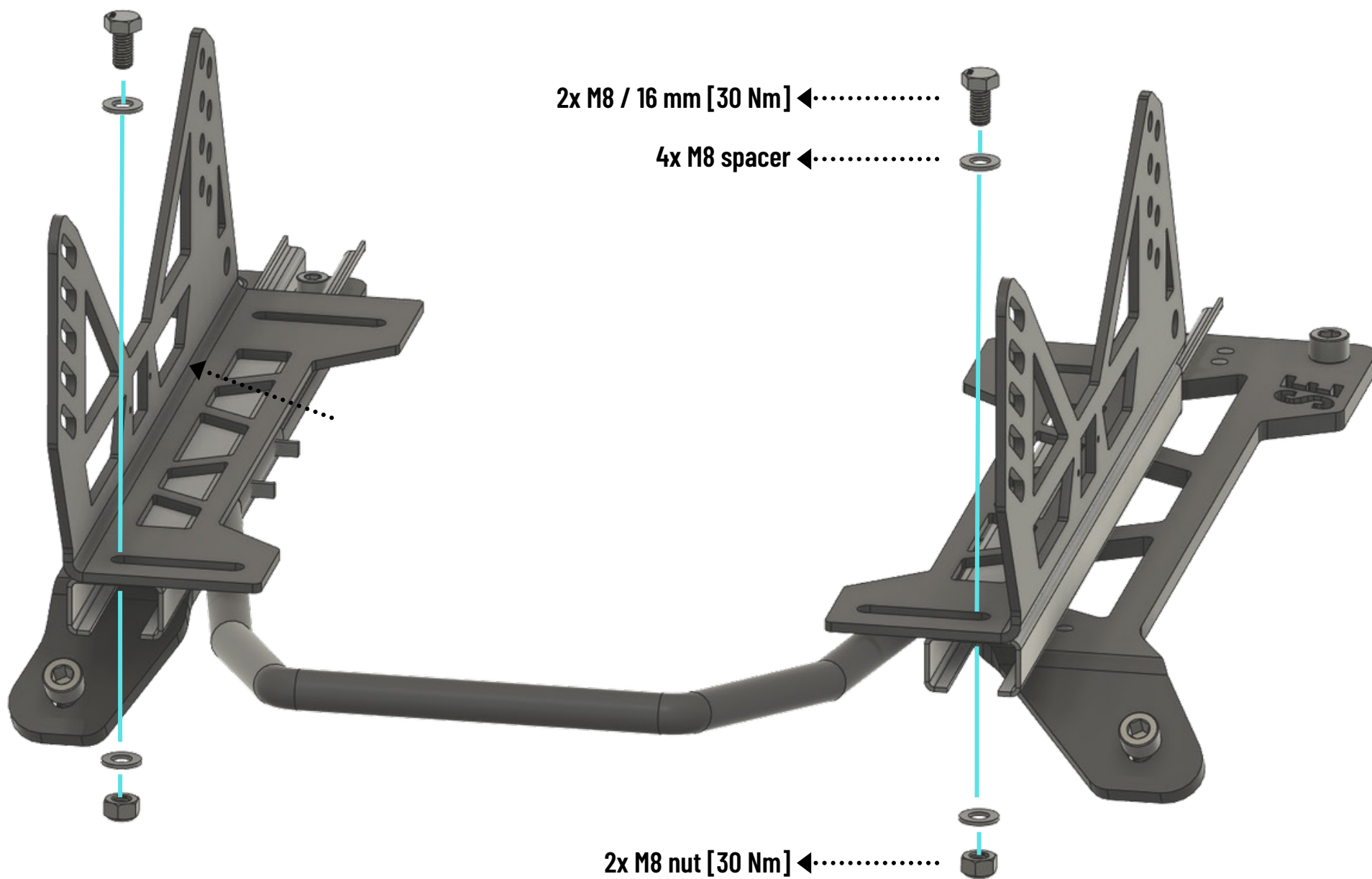
Driver



## STEP 5

### L Adaptor assembly front Driver

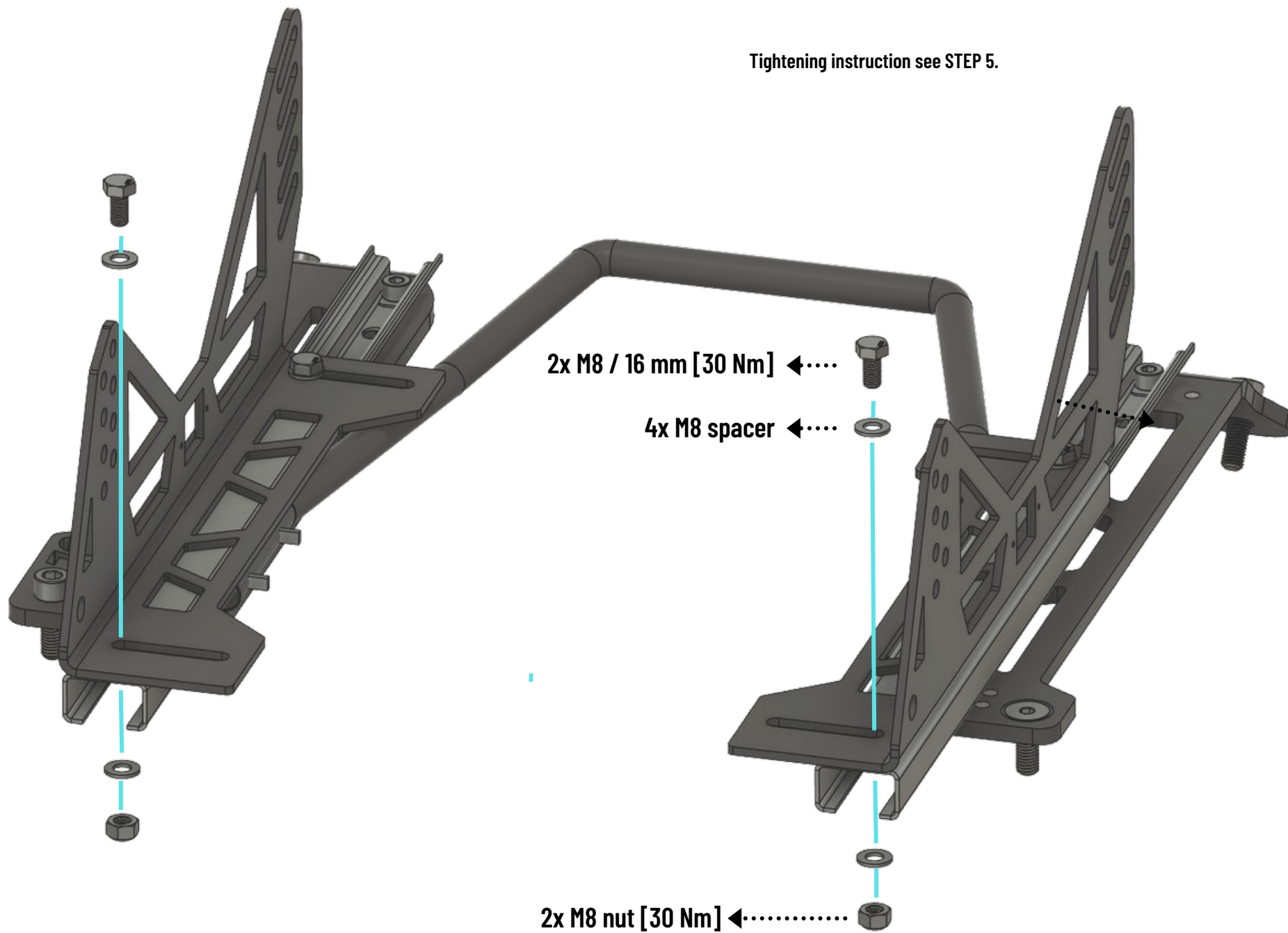
If the seat position is not known yet, only hand  
tight assembly is recommended. Final assembly  
can be done with the installed seat.



**STEP 6**

**L Adaptor assembly rear**

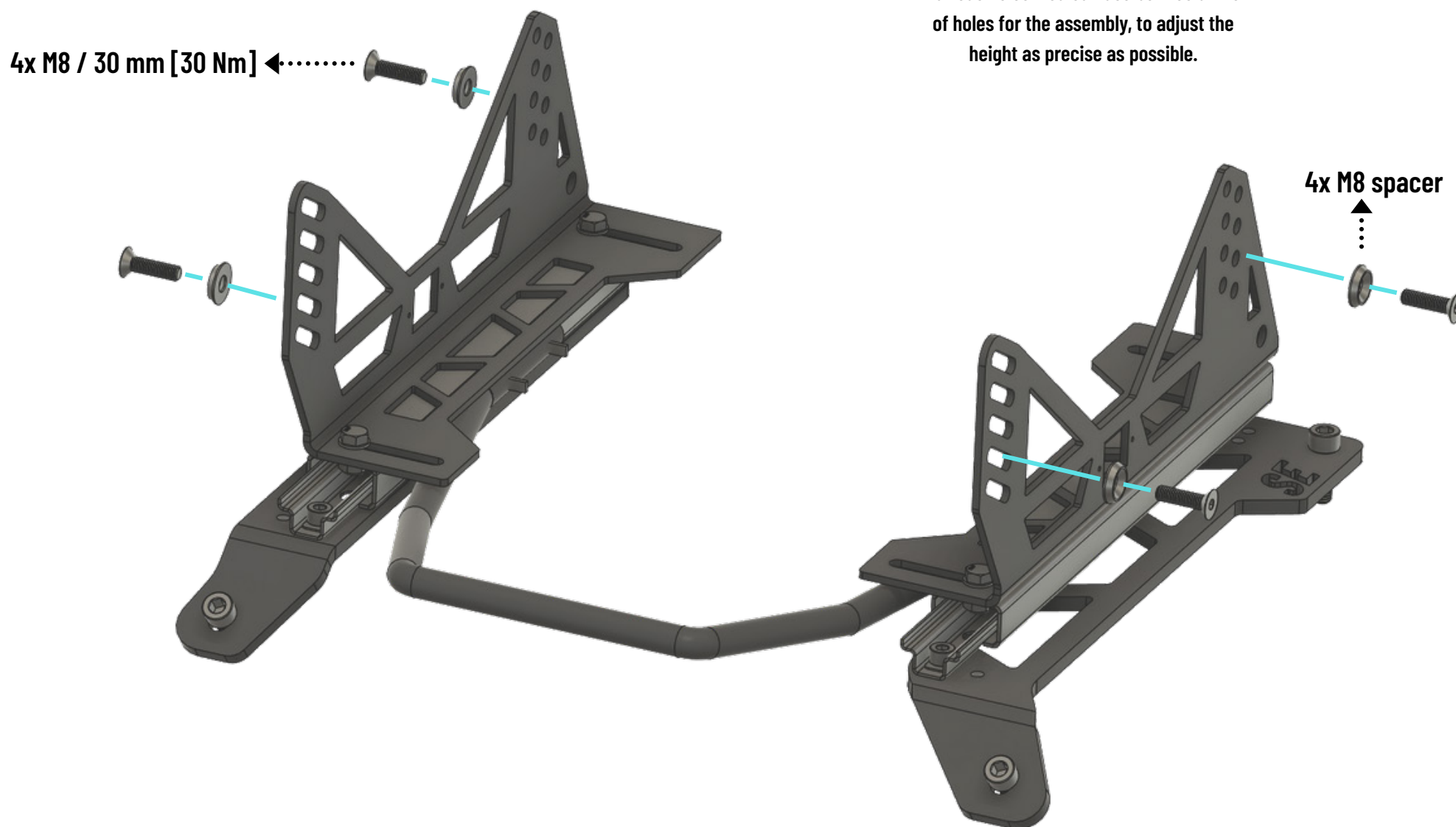
Tightening instruction see STEP 5.



## STEP 7

### Seat assembly

Adjust the seat position height by the various holes. You can use both columns of holes for the assembly, to adjust the height as precise as possible.



## STEP 8

### Seat adjustment

