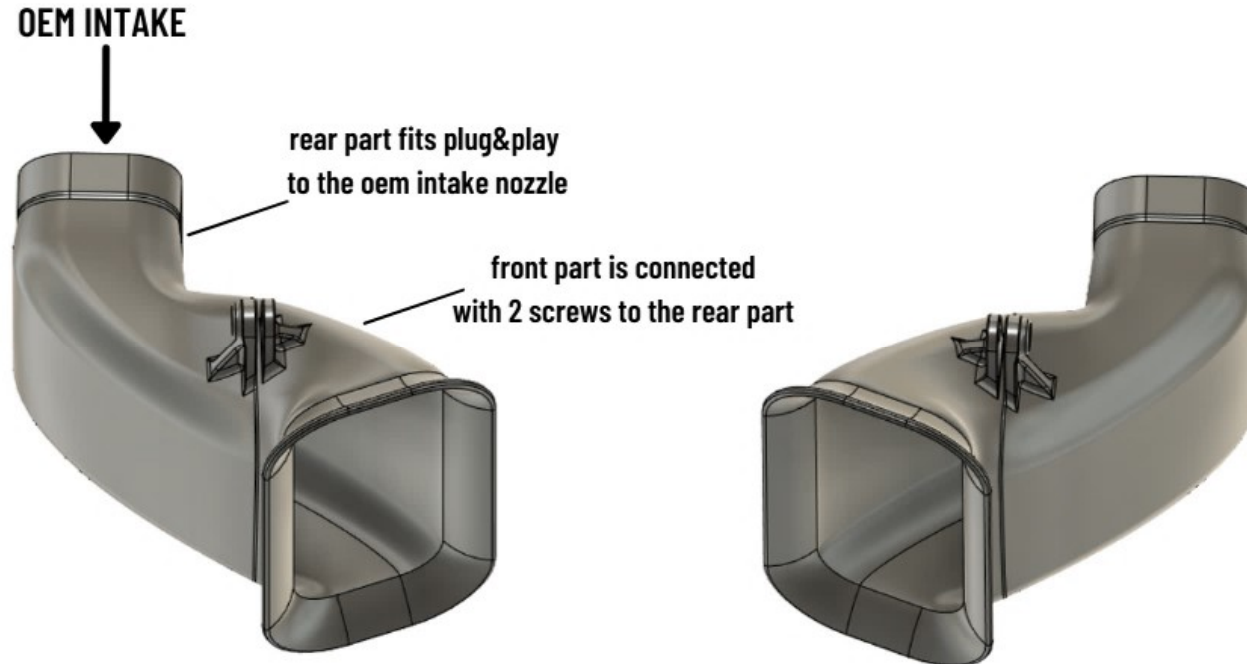




BMW M2 Competition Intake Upgrade Kit Manual



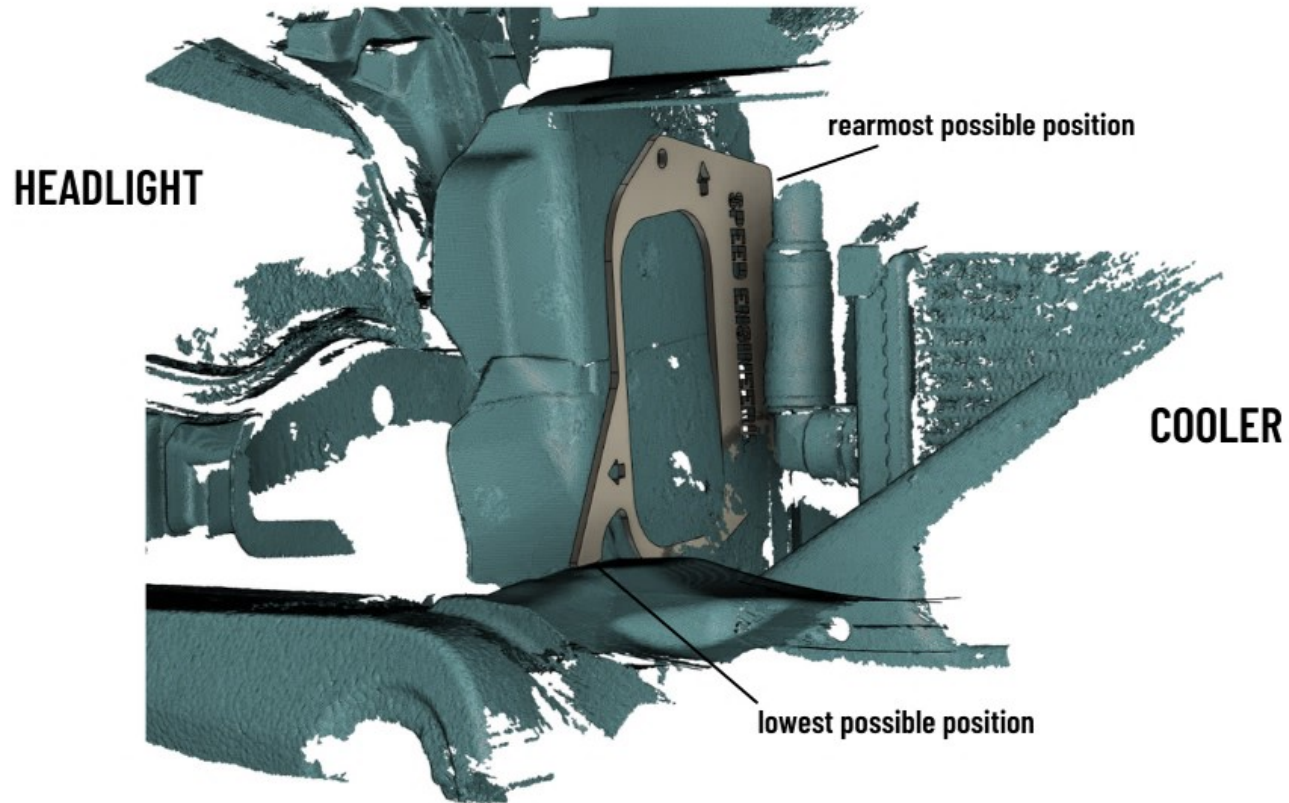
**before connecting front and rear part, the cutting
of the partition wall is required**

This product is designed and produced by the SPEED Engineering GmbH.
If you have any questions or comments,
please feel free to contact us.



BMW M2 Competition Intake Upgrade Kit Manual

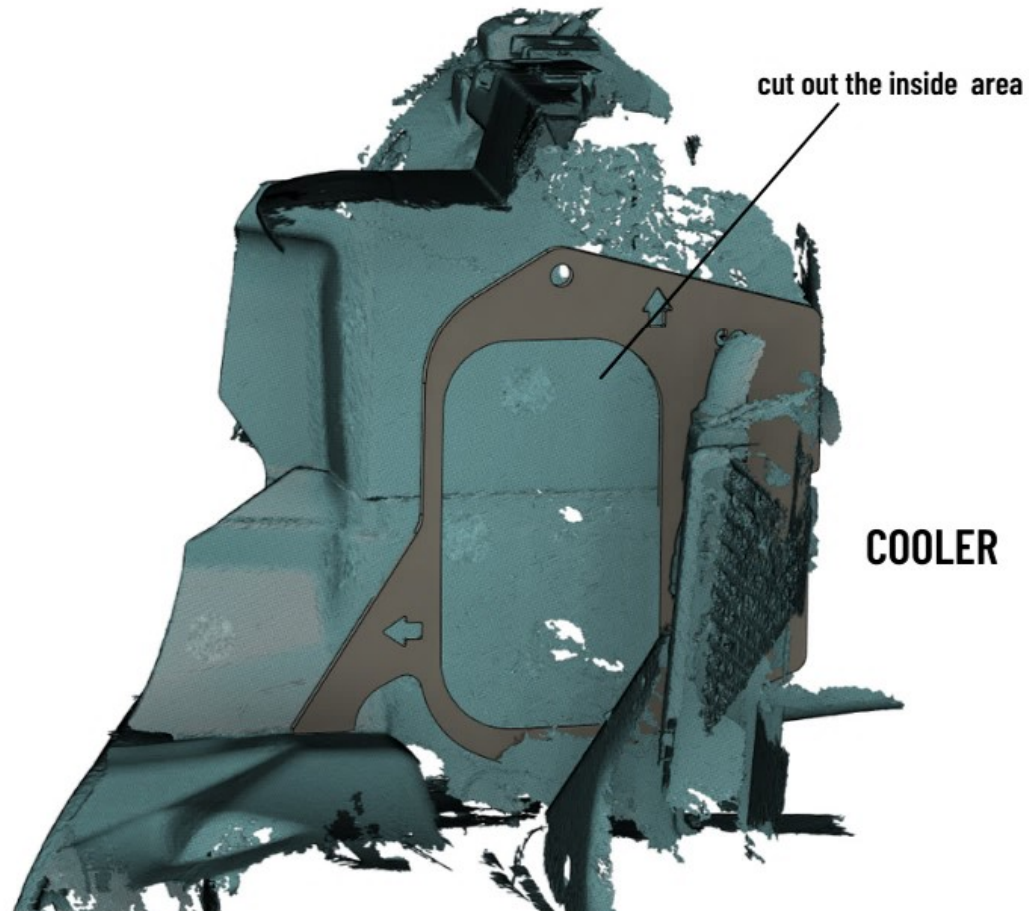
use the cutting template by placing it with the arrows showing
up and in driving direction.



This product is designed and produced by the SPEED Engineering GmbH.
If you have any questions or comments,
please feel free to contact us.



**BMW M2 Competition Intake Upgrade Kit
Manual**

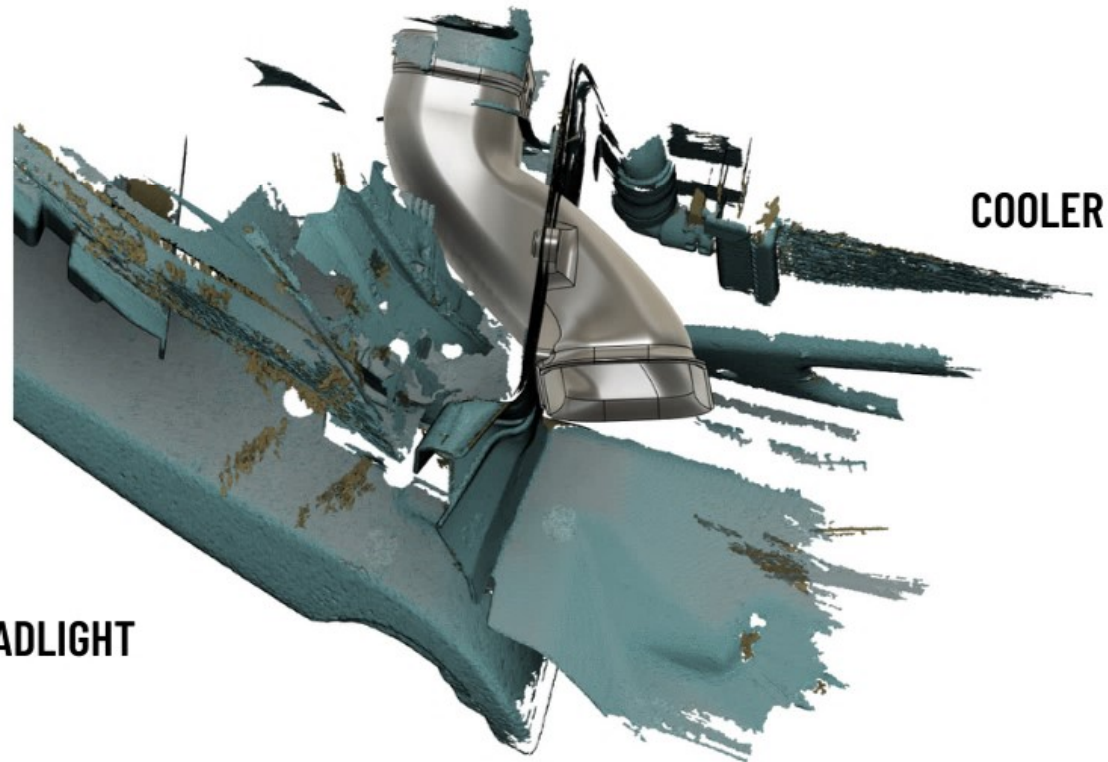


This product is designed and produced by the SPEED Engineering GmbH.
If you have any questions or comments,
please feel free to contact us.



BMW M2 Competition Intake Upgrade Kit Manual

connect the front and rear part of the intake kit by using the M4 screws



HEADLIGHT

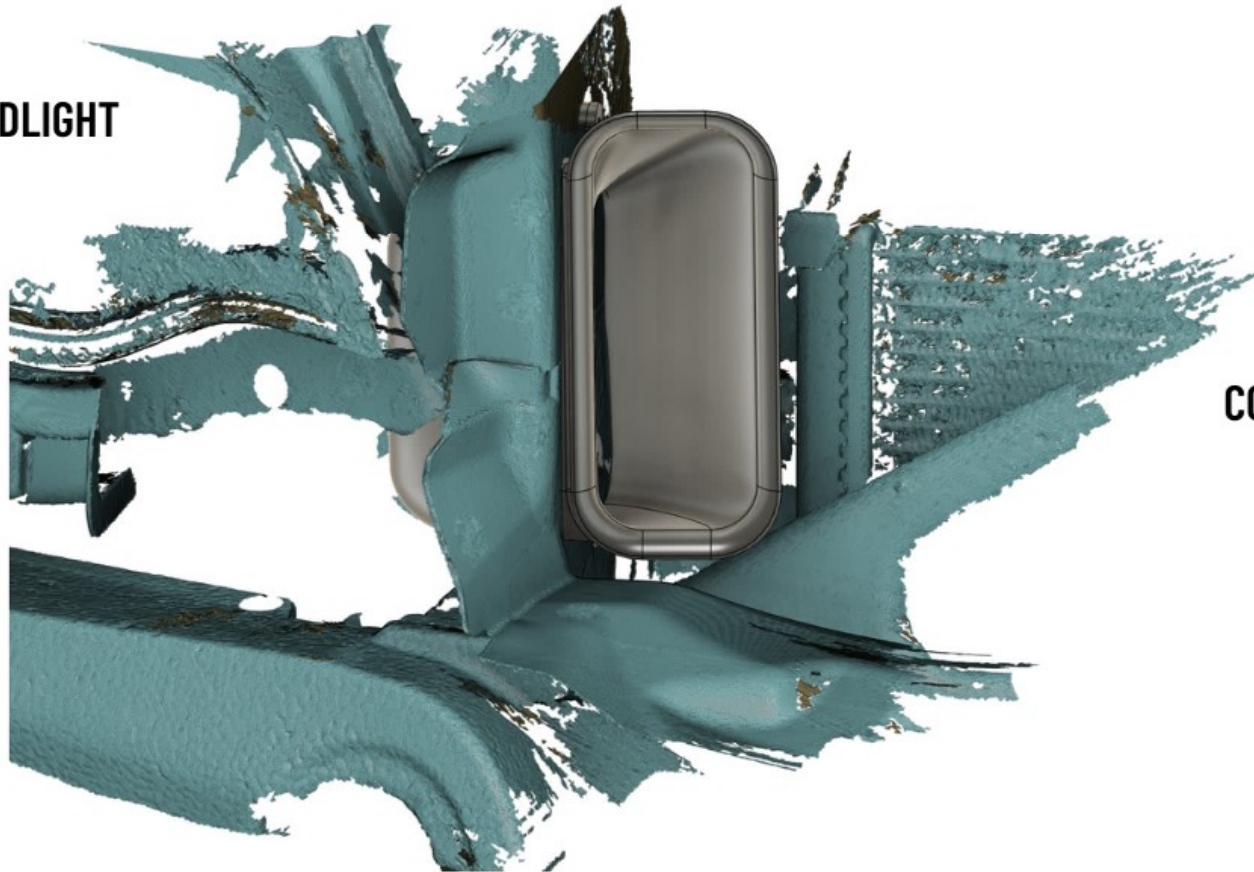
COOLER

This product is designed and produced by the SPEED Engineering GmbH.
If you have any questions or comments,
please feel free to contact us.



**BMW M2 Competition Intake Upgrade Kit
Manual**

HEADLIGHT



COOLER

**This product is designed and produced by the SPEED Engineering GmbH.
If you have any questions or comments,
please feel free to contact us.**

www.speedengineering.de