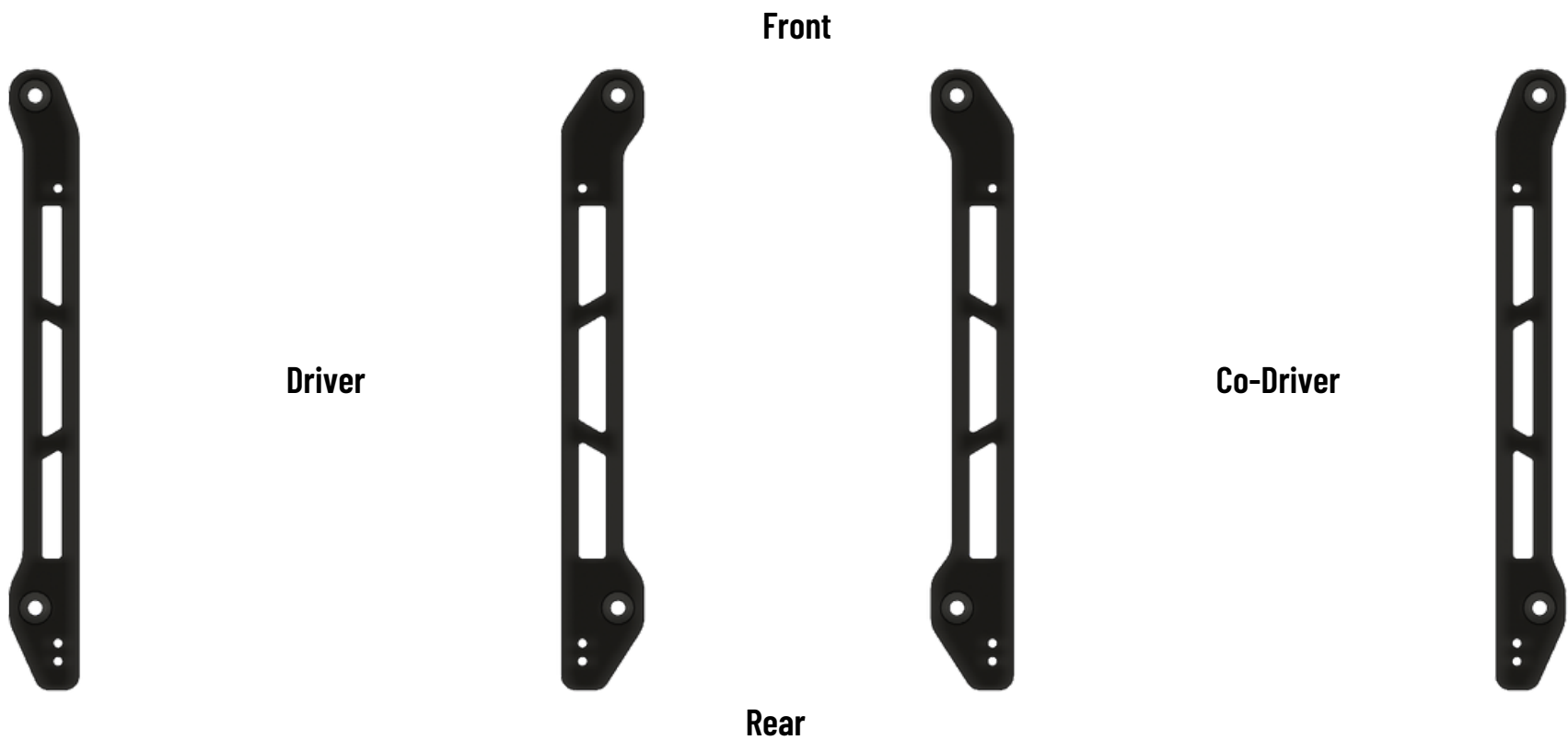




## Mini F56 Seat Mount Kit Manual

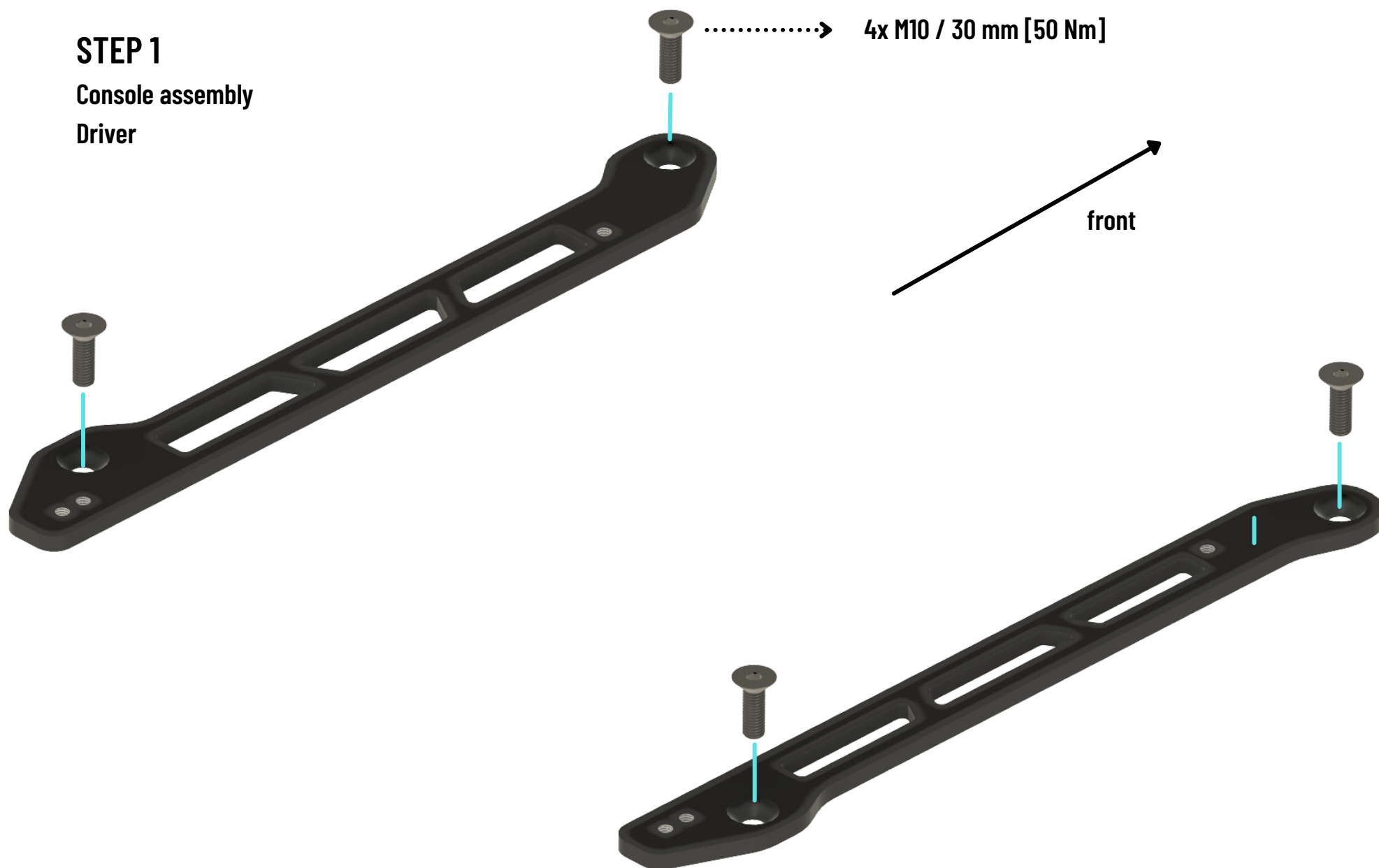


The following instruction applies to both versions (driver/co-driver) of this seat mount kit.

This product is designed and produced by the SPEED Engineering GmbH.  
If you have any questions or comments,  
please feel free to contact us.

**STEP 1**

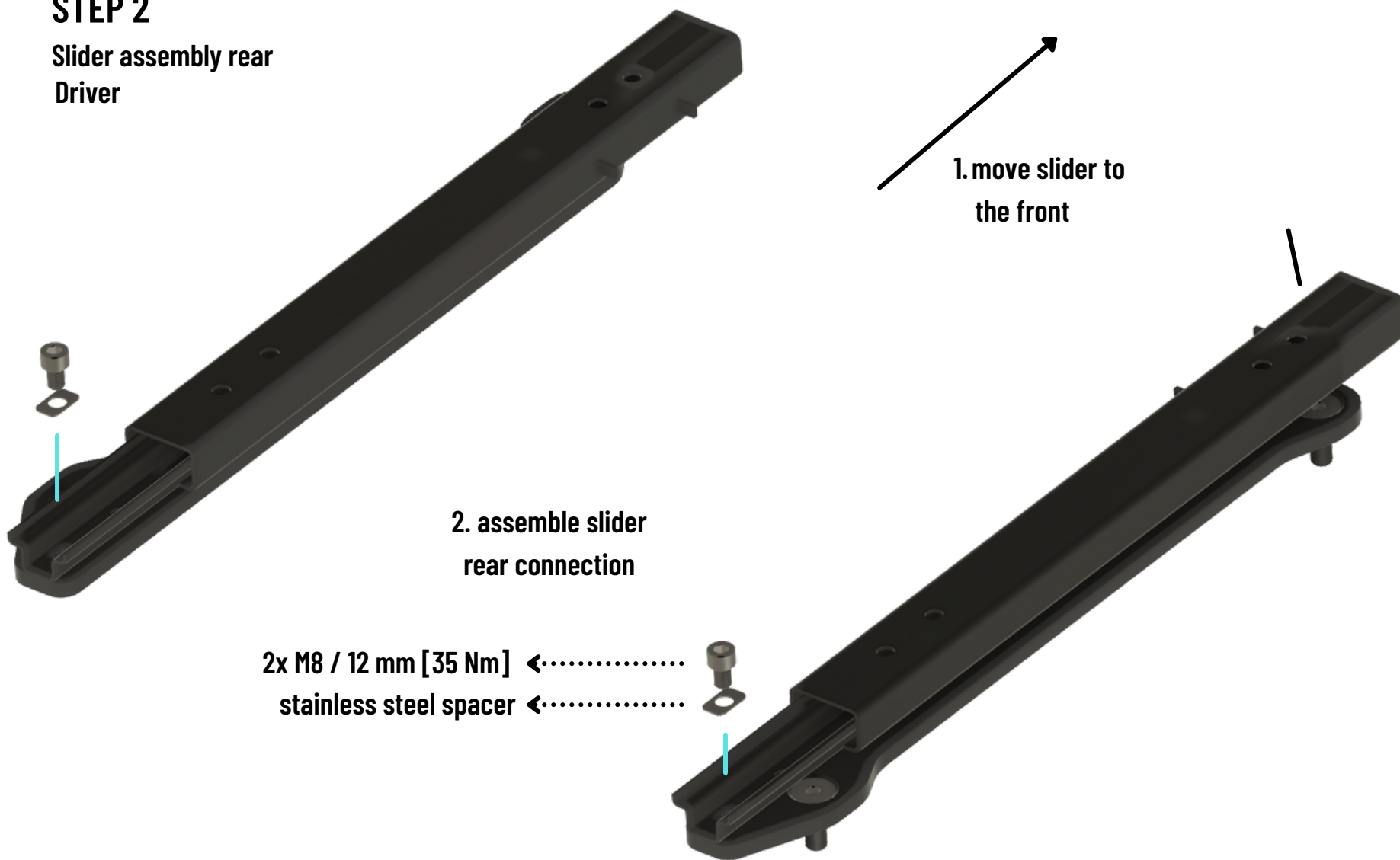
Console assembly  
Driver



**Please note! : If you're installing the co-driver seat mount, the parts need to be mounted mirrored.**

**STEP 2**

Slider assembly rear  
Driver

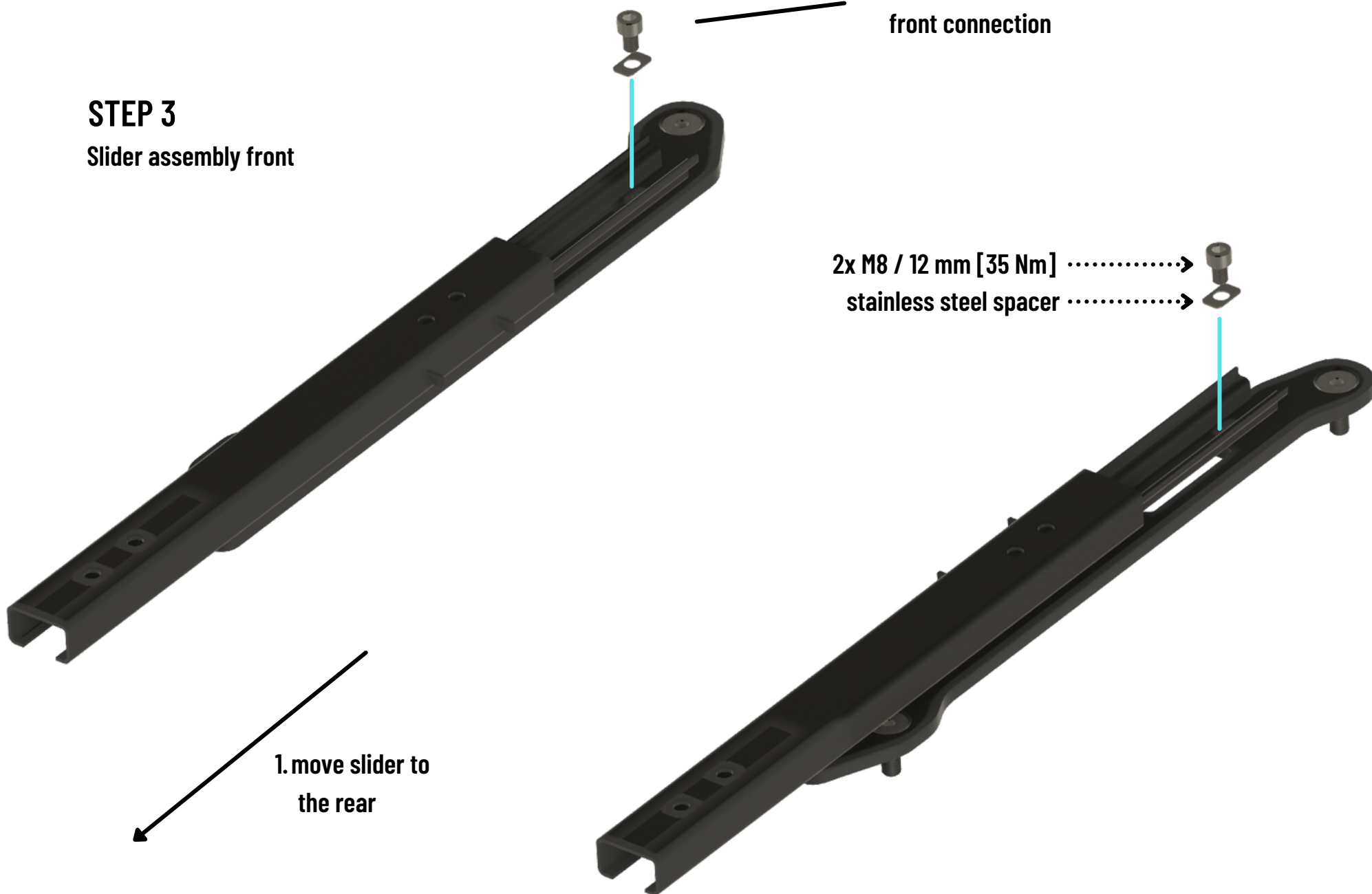


**STEP 3**  
Slider assembly front

2. assemble slider  
front connection

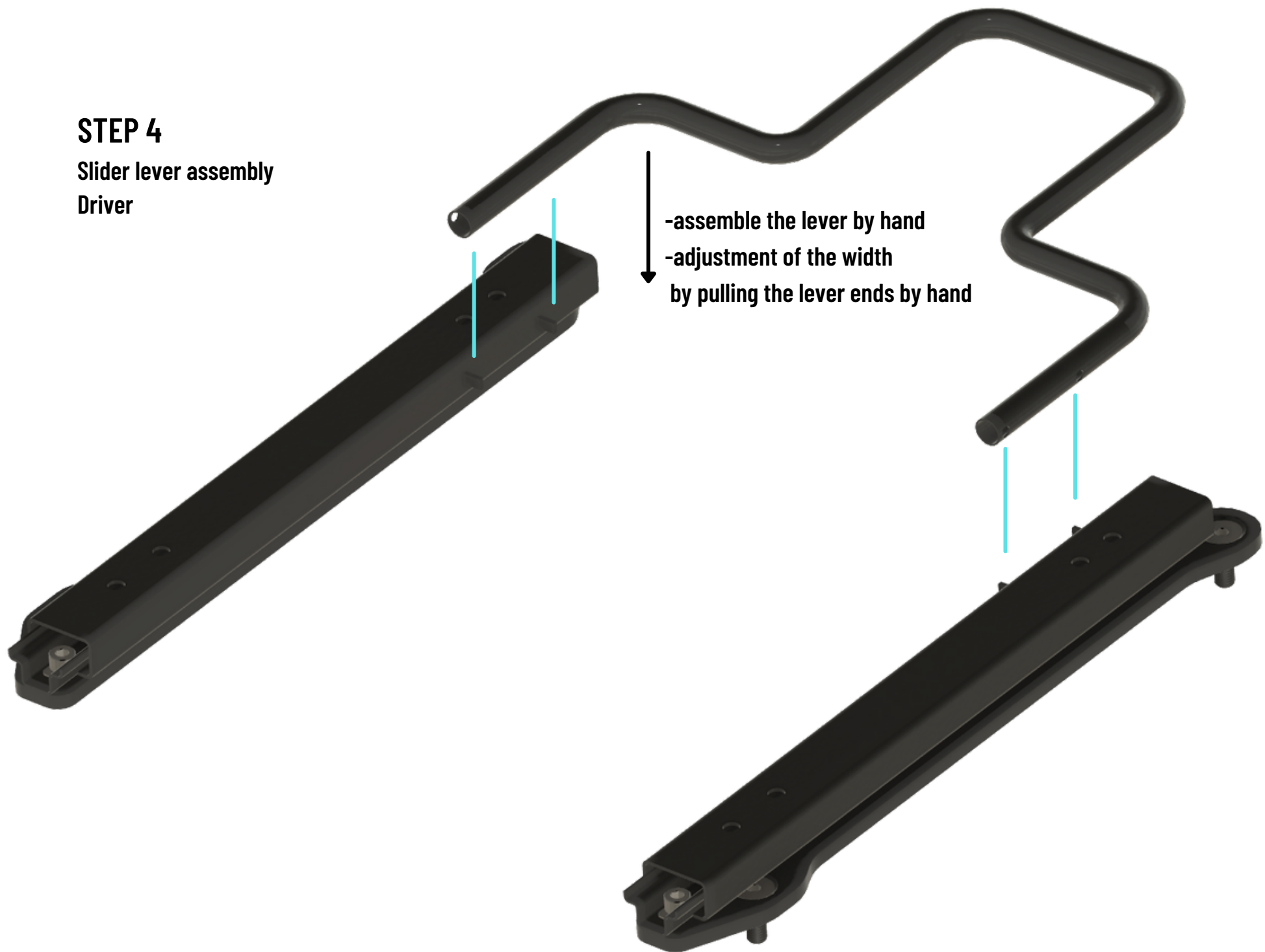
2x M8 / 12 mm [35 Nm] .....>  
stainless steel spacer .....>

1. move slider to  
the rear



**STEP 4**

Slider lever assembly  
Driver

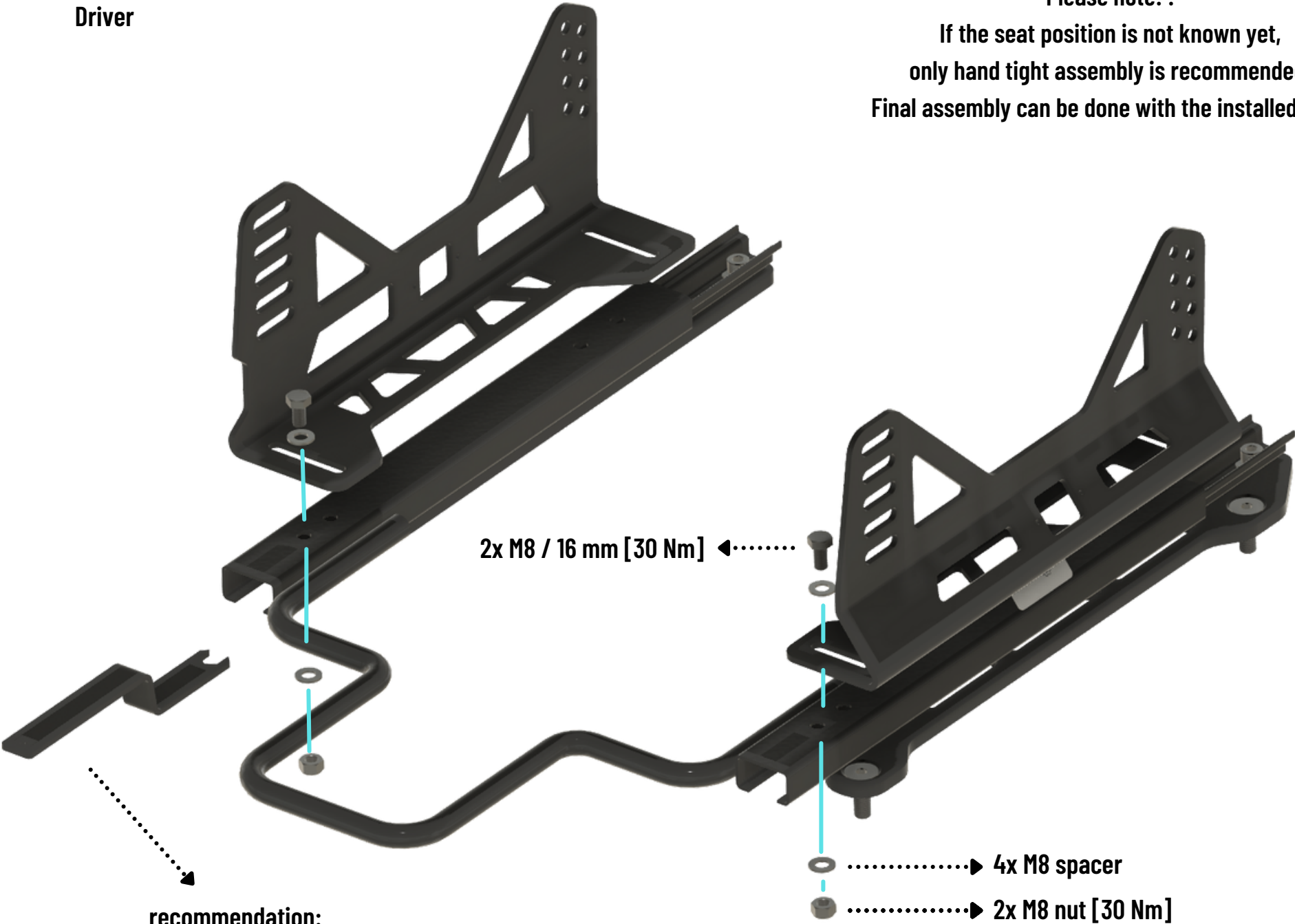


**Please note! : Handle the lever with care. Don't push/pull it with too much strength.**

# STEP 5

L Adaptor assembly front  
Driver

**Please note! :**  
If the seat position is not known yet,  
only hand tight assembly is recommended.  
Final assembly can be done with the installed seat.

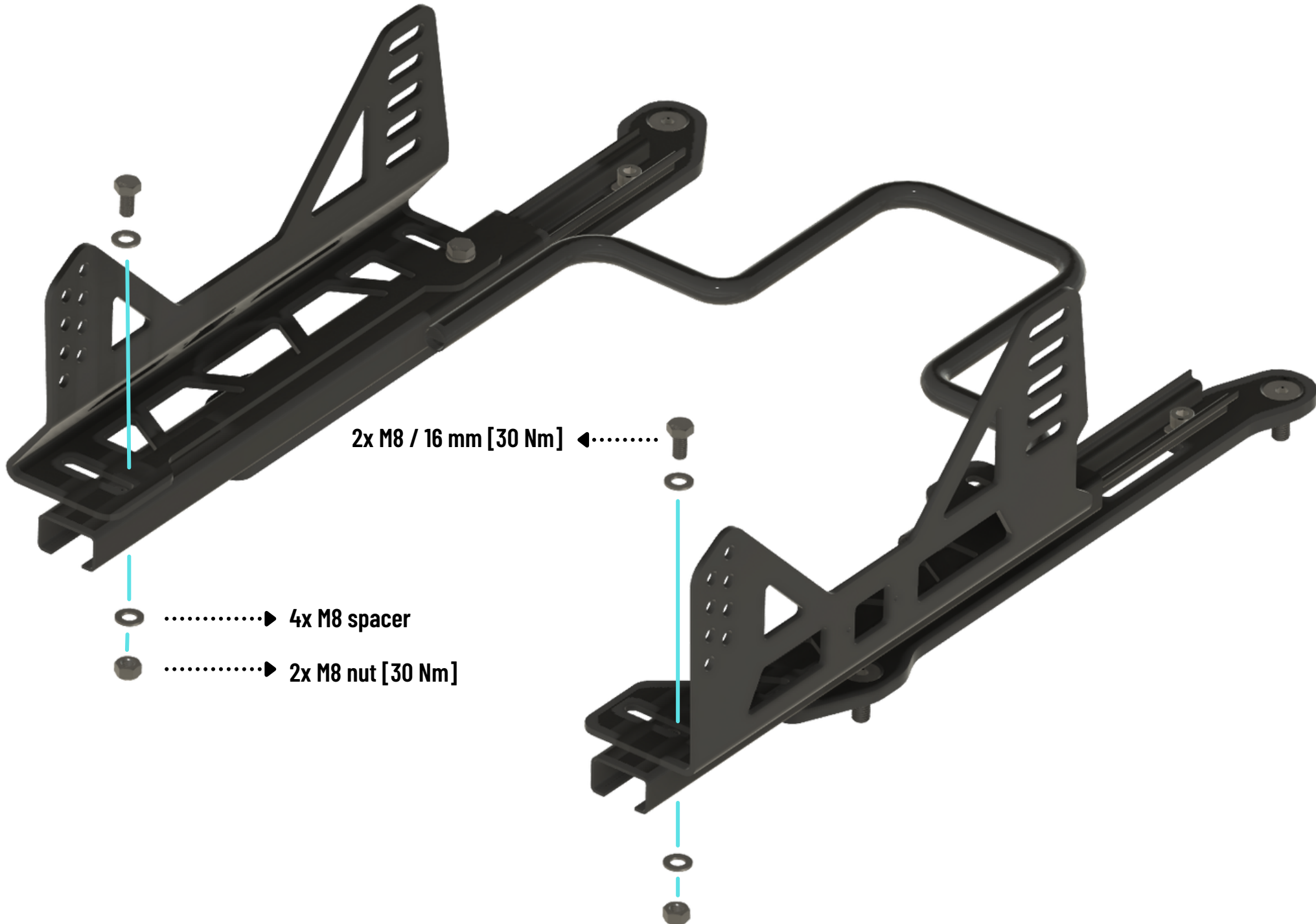


**recommendation:**  
use special slider tool to counter the  
screw inside the slider, Art. 13202

**STEP 6**

**L Adaptor assembly rear**

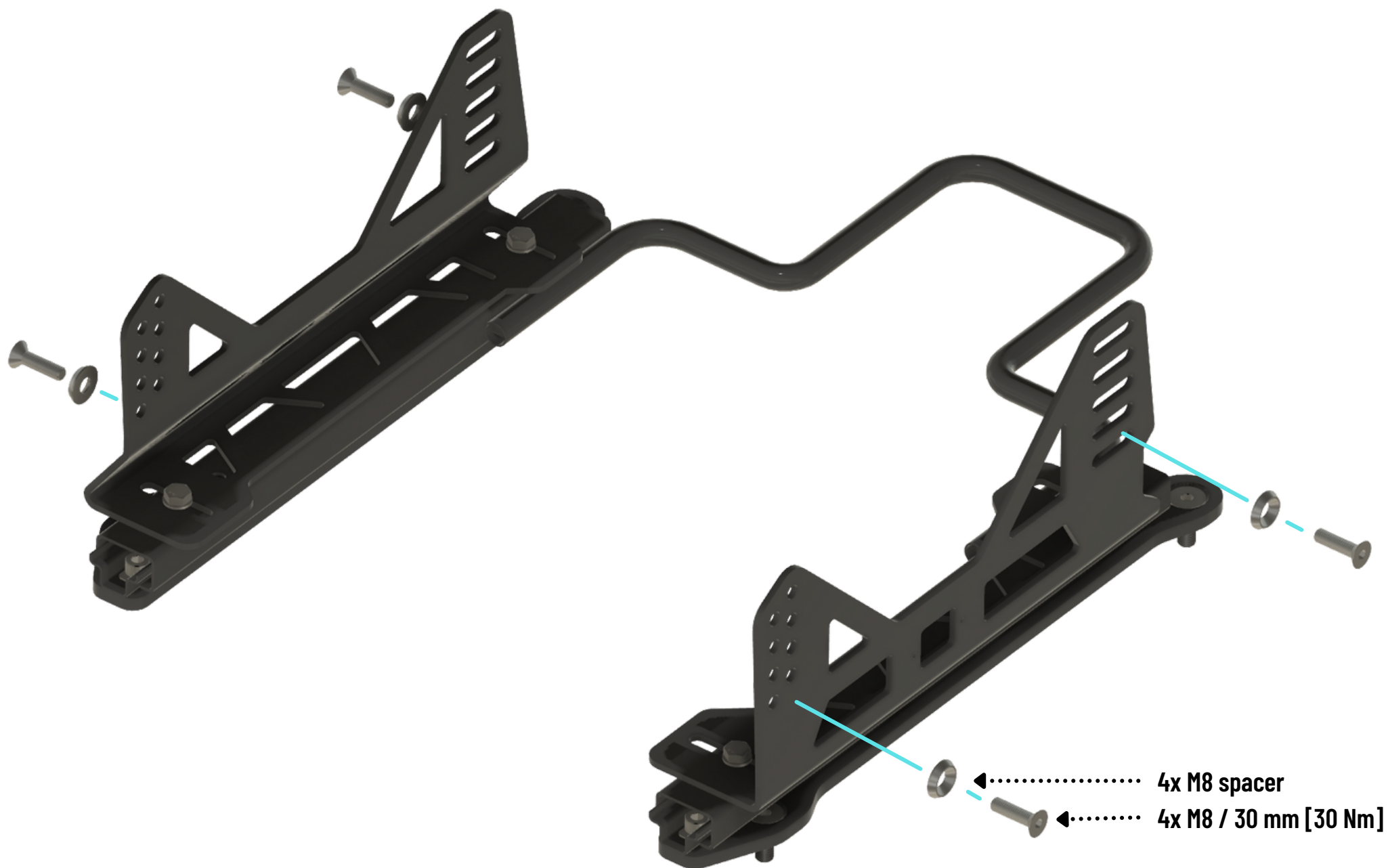
Tightening instruction see STEP 5.



## STEP 7

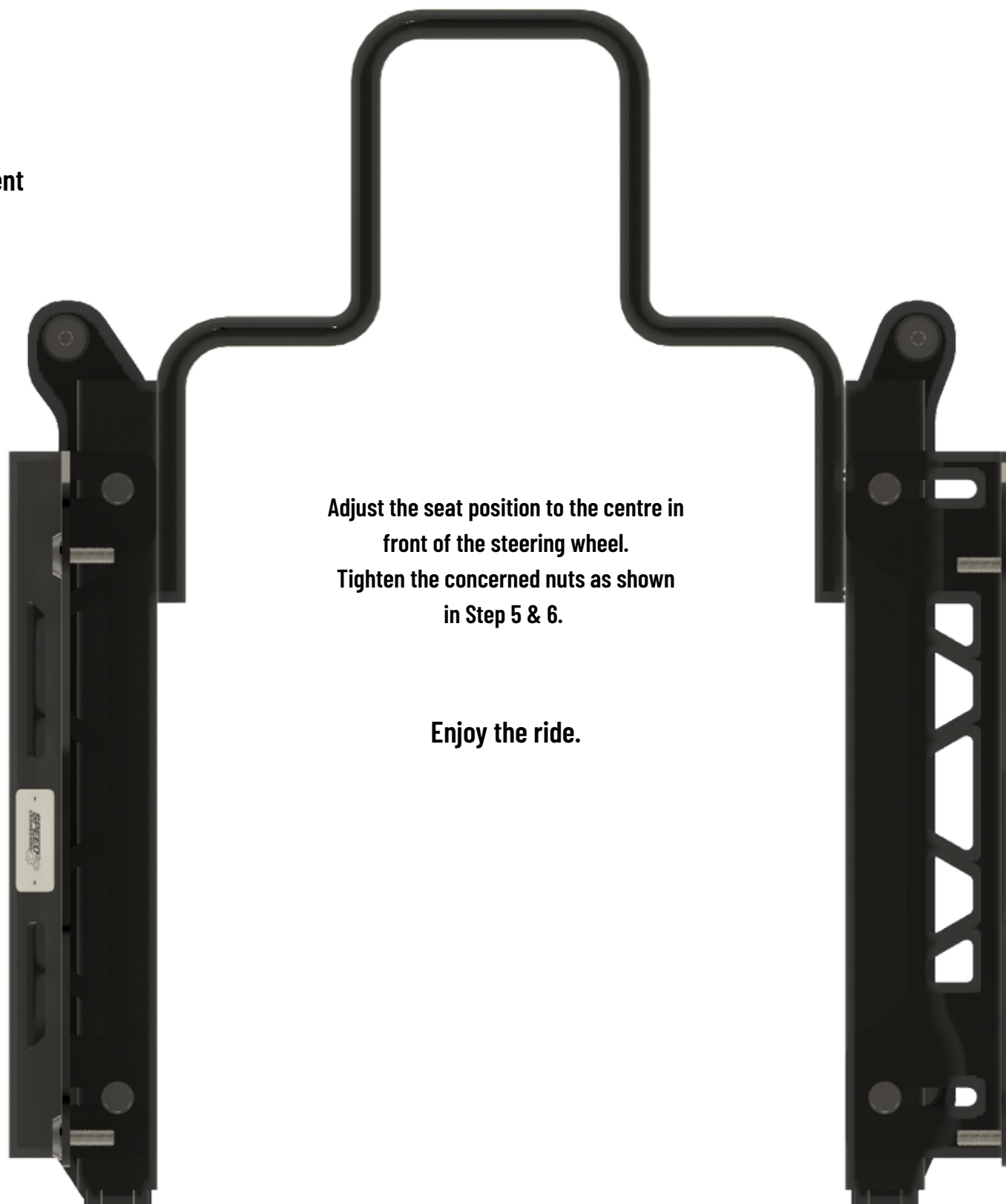
### Seat assembly

Adjust the seat position height by the various holes. You can use both columns of holes for the assembly, to adjust the height as precise as possible.





**STEP 8**  
Seat adjustment



Adjust the seat position to the centre in front of the steering wheel.  
Tighten the concerned nuts as shown in Step 5 & 6.

Enjoy the ride.