



Honda Civic FK8 Seat Mount Kit Manual



Driver

Front



Rear

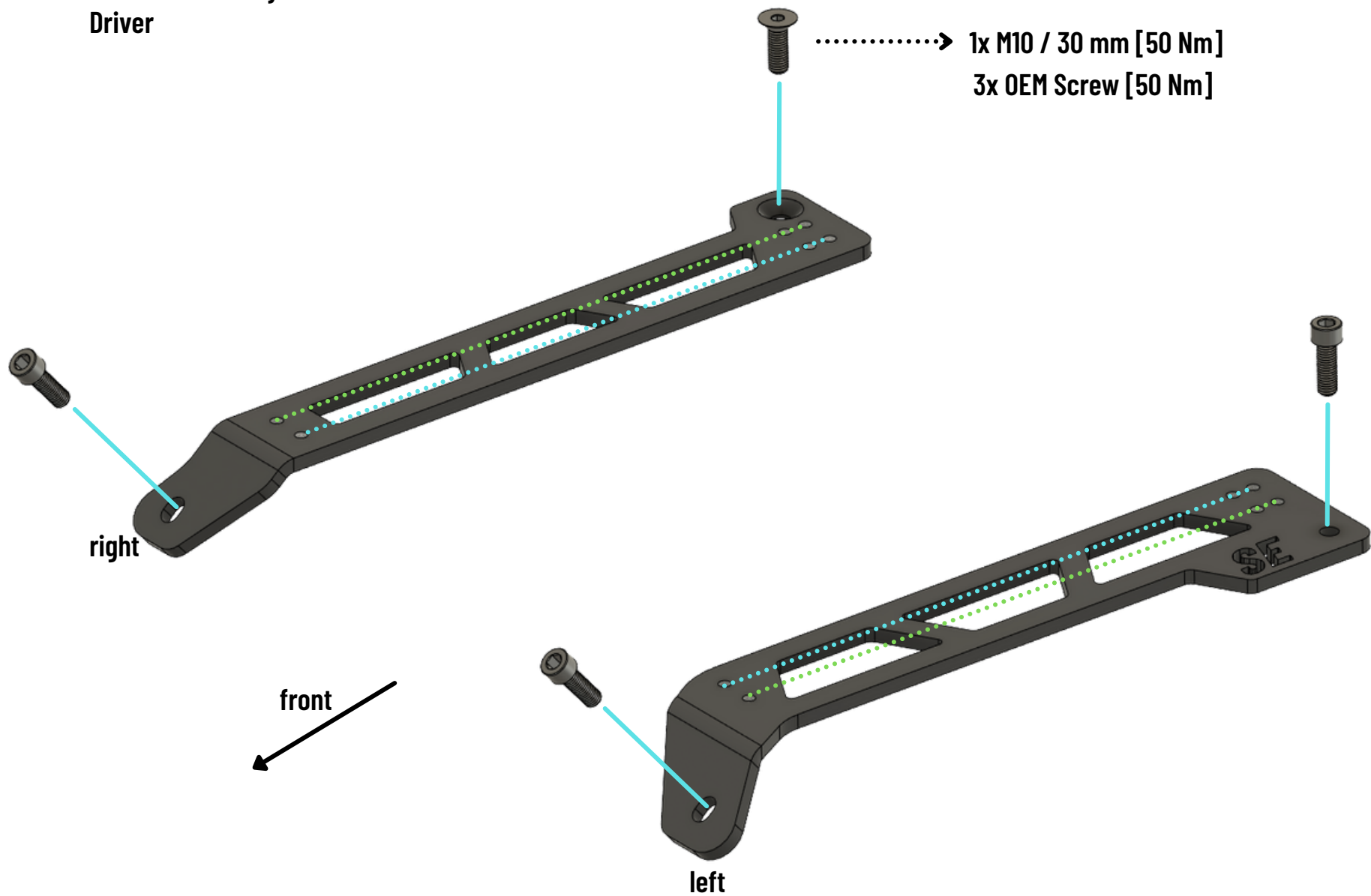
Co- Driver



This product is designed and produced by the SPEED Engineering GmbH.
If you have any questions or comments,
please feel free to contact us.

STEP 1

Console assembly
Driver

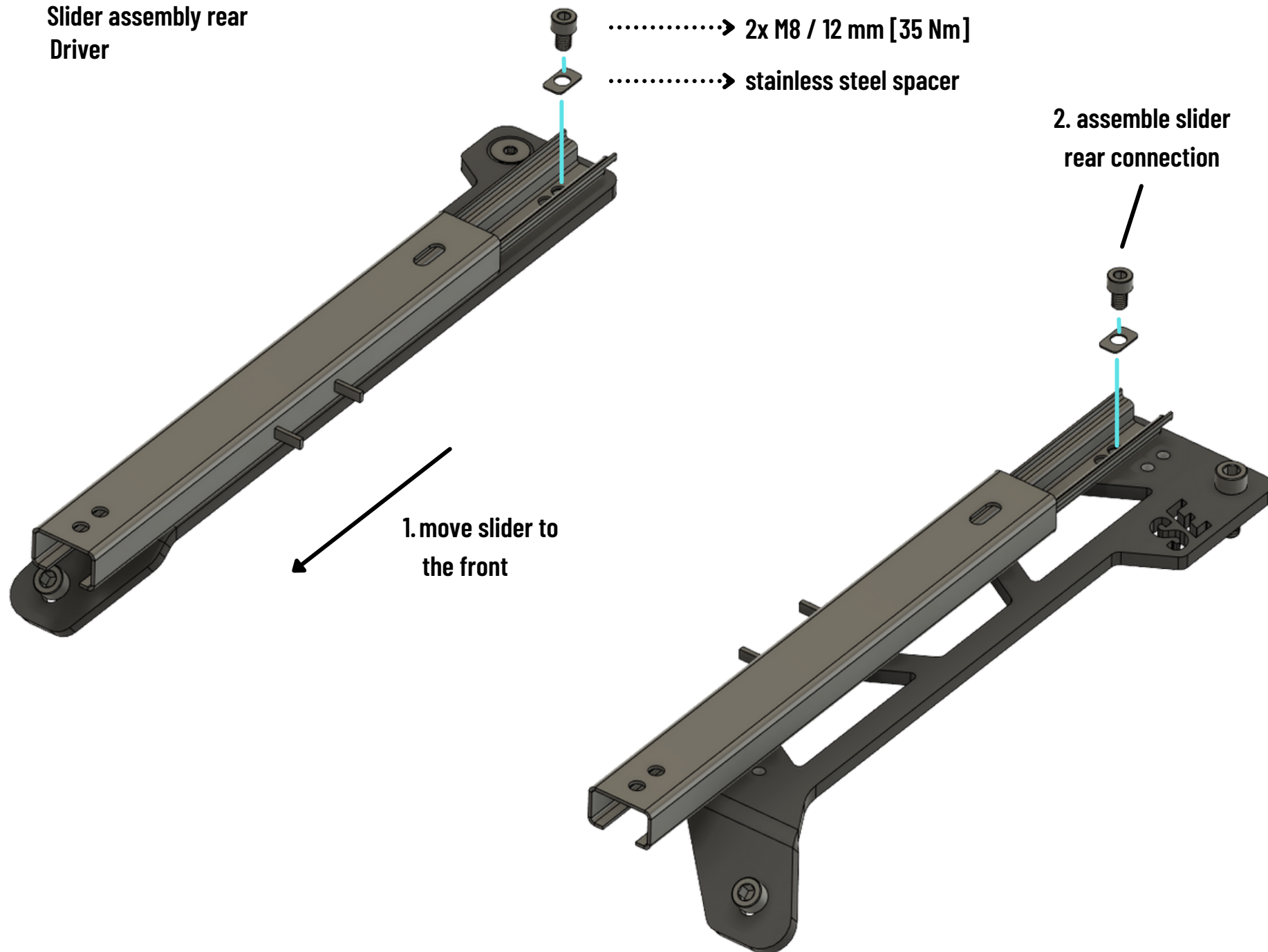


Use inner thread holes for the assembly of smaler seats like
Recaro SPG
Sparco REV
Sparco Sprint

Use outer thread holes for the assembly of larger seats like
Recaro Pole Position
Sparco Pro 2000
Sparco Evo L

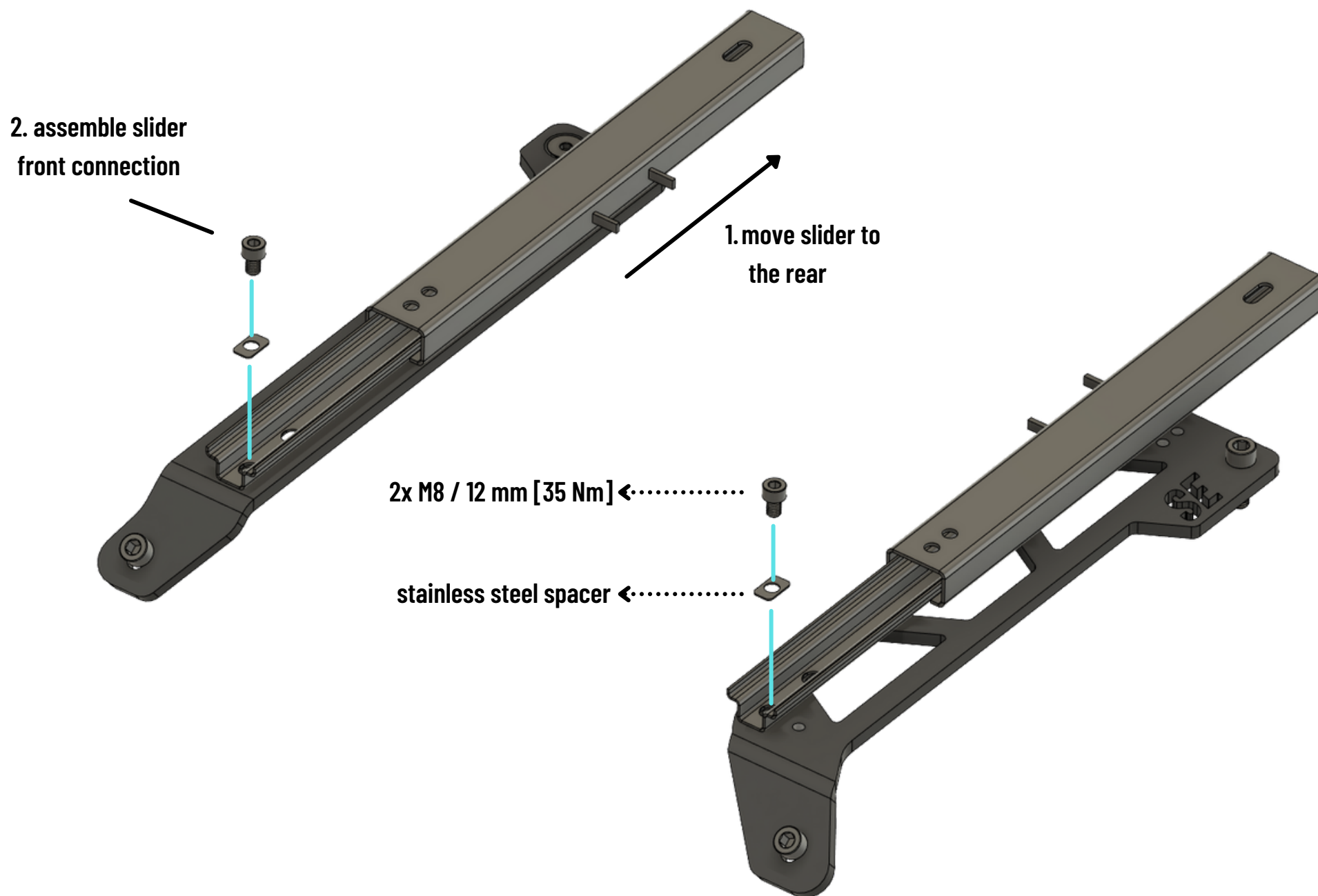
STEP 2

Slider assembly rear
Driver



STEP 3

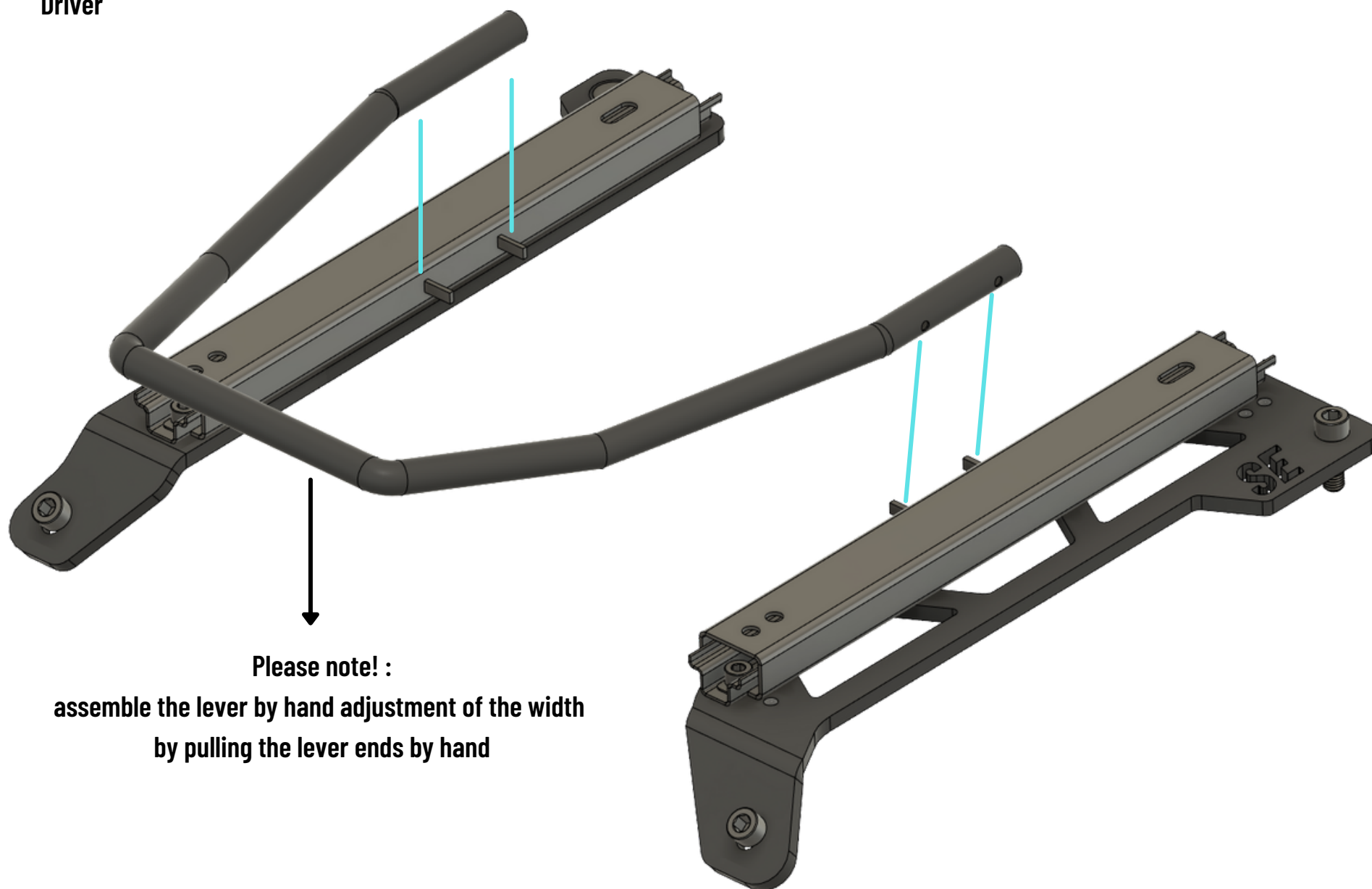
Slider assembly front



STEP 4

Slider lever assembly

Driver



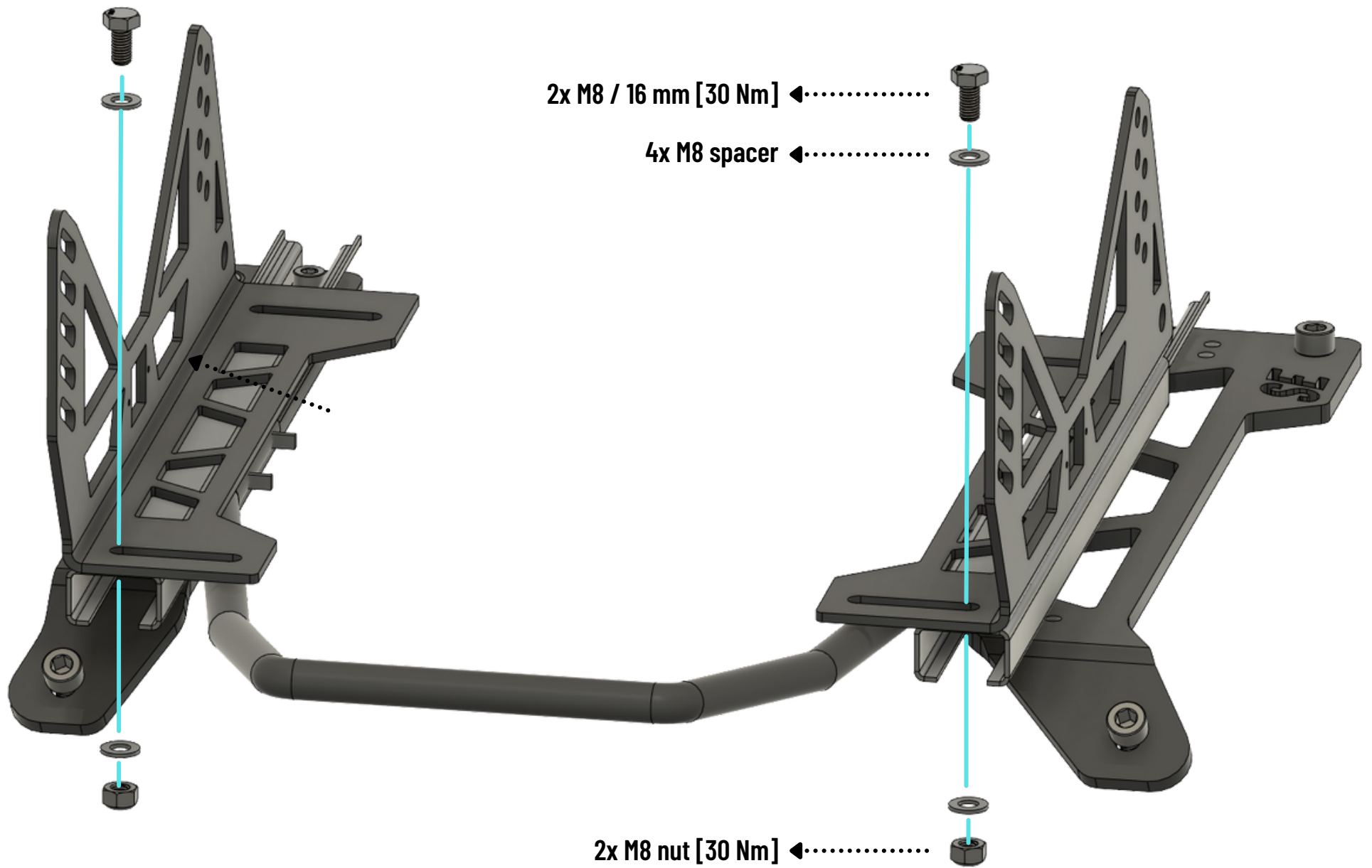
Please note! :

**assemble the lever by hand adjustment of the width
by pulling the lever ends by hand**

STEP 5

L Adaptor assembly front Driver

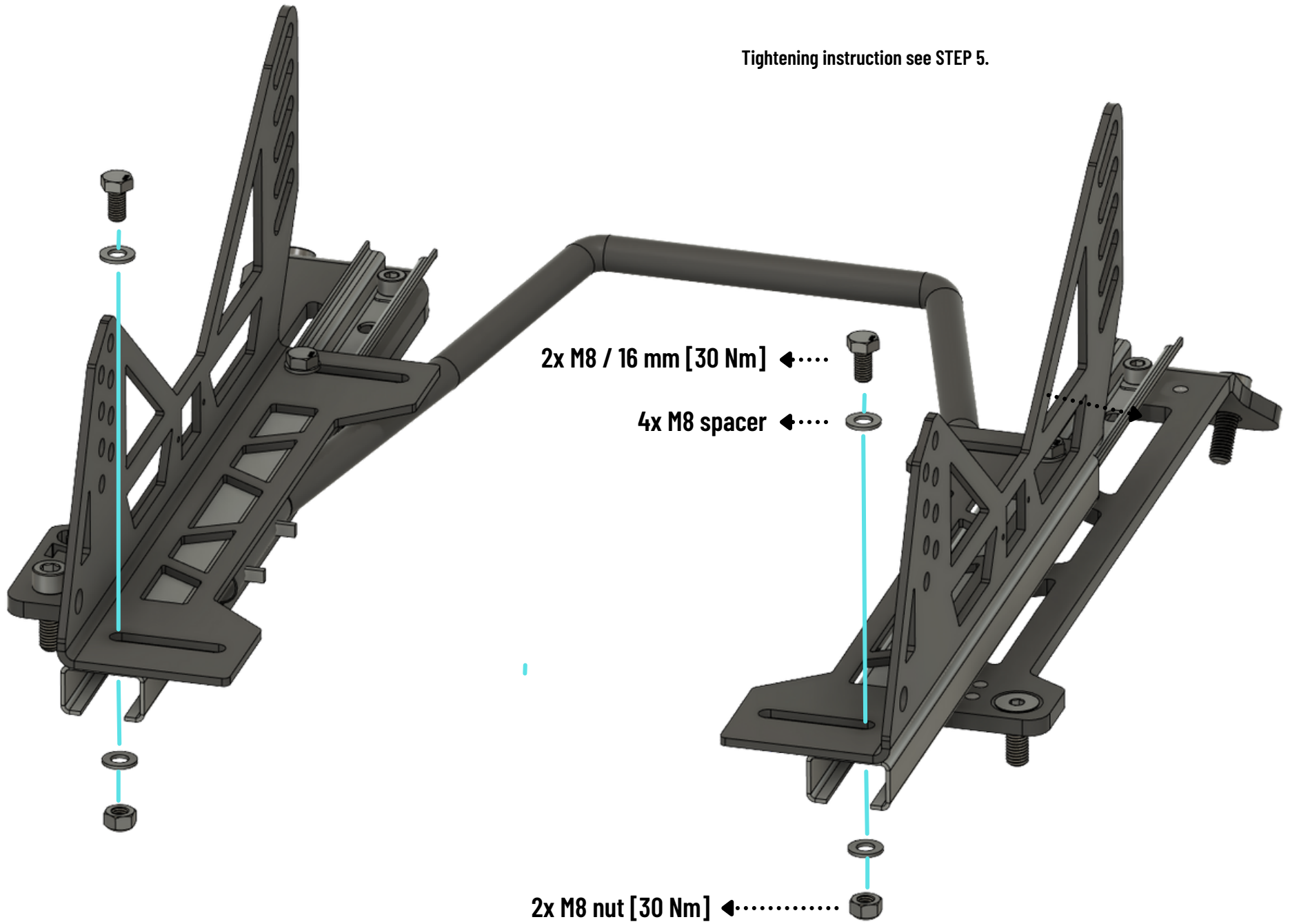
If the seat position is not known yet,
only hand tight assembly is recommended.
Final assembly can be done with the installed seat.



STEP 6

L Adaptor assembly rear

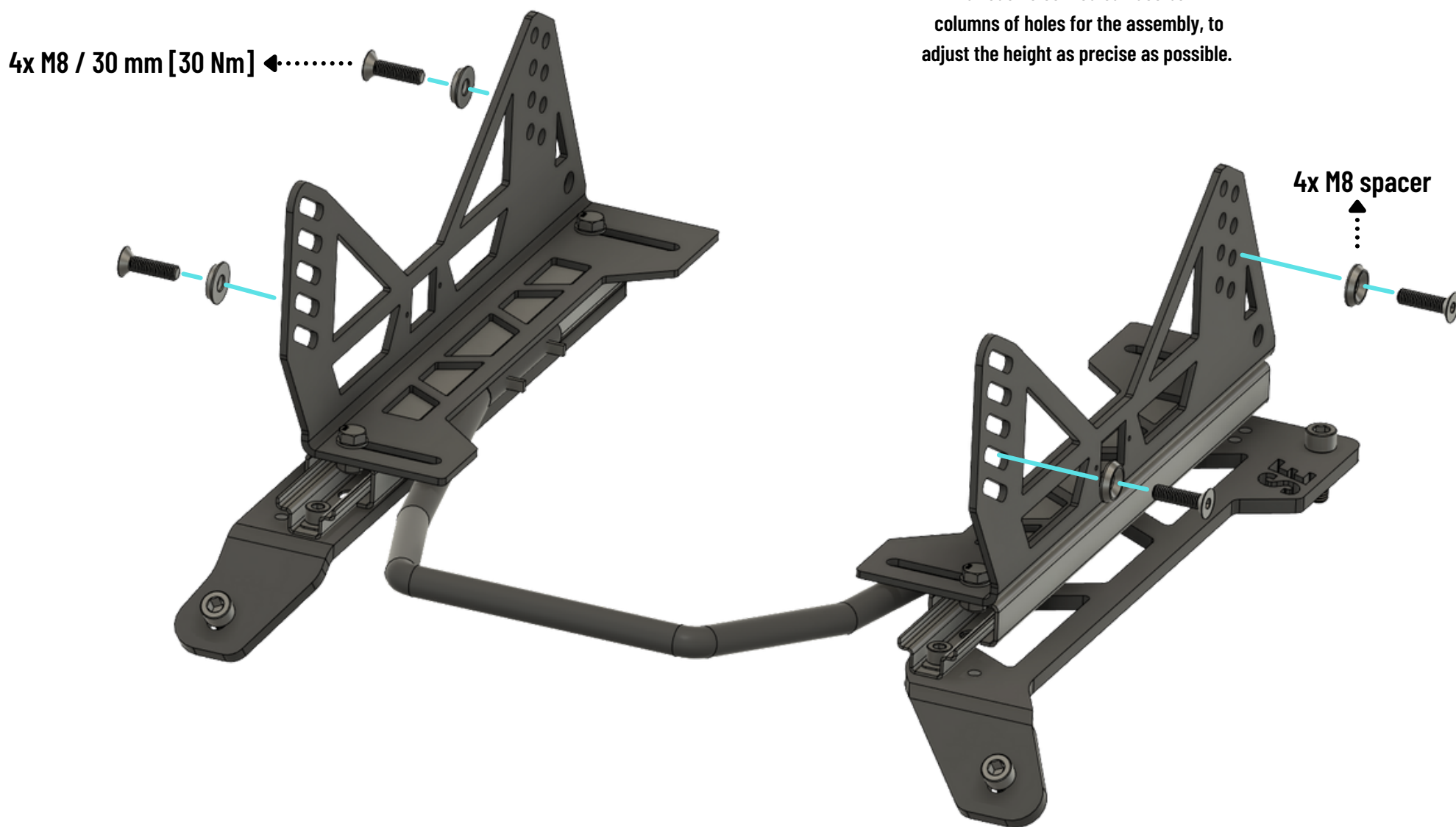
Tightening instruction see STEP 5.



STEP 7

Seat assembly

Adjust the seat position height by the various holes. You can use both columns of holes for the assembly, to adjust the height as precise as possible.



STEP 8
Seat adjustment

