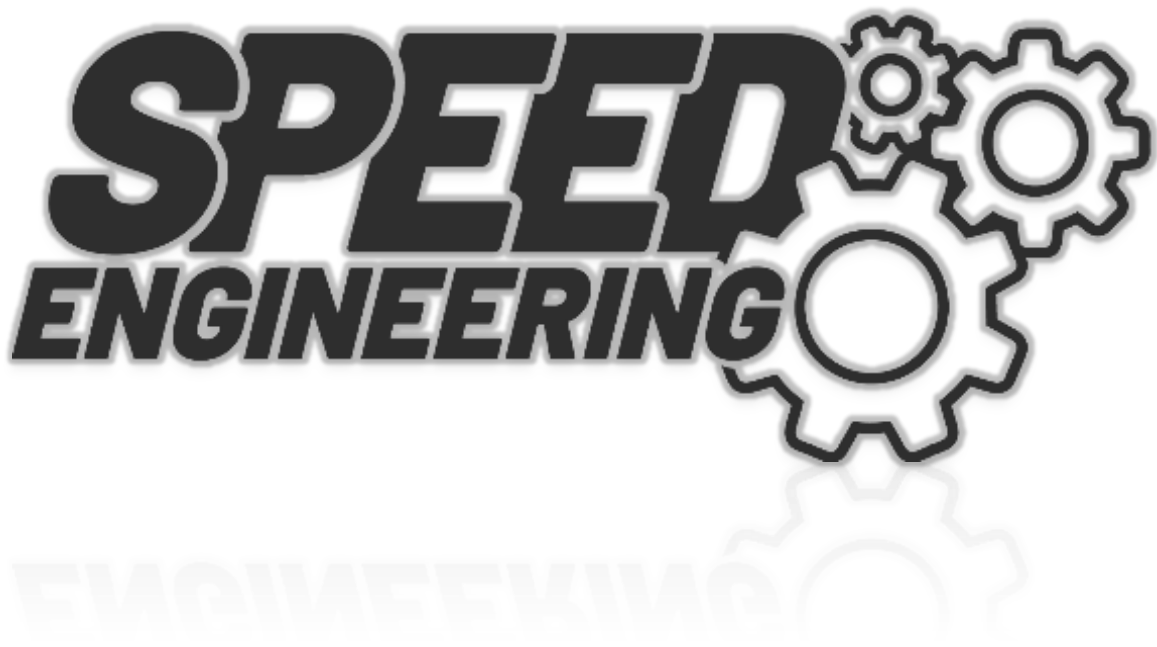

INSTALLATION MANUAL

SPEED Swan Neck Wing ***engineered for Toyota Supra A90***



This manual is written with the utmost care. However, should there be any errors, we are not liable for incorrect and unsafe installation or the resulting damage!

Before you start, please check the completeness of your kit and make sure you have the right tools!

[For further installation tips, please watch the installation video on youtube.](#)

Scope of delivery:

(wing related parts):

1x carbon fibre wing with aluminum mounting points

2x aluminum wing adapter

2x 5-axis milled aluminum stands for the wing

4x reinforcement plates (2x big, 2x small)

(fastening materials):

8x M6x10 lens flange screw

6x M6x20 lens head screw

4x M6x25 lens head screw

8x M6 sleeve nut

6x big washer

6x M6 locking nut

2x square washers



Step 1



Unscrew the inside trunk lid cover and pull off the cover.

Step 2



Unscrew the electronics. Don't plug them off, just let them hang down.



Step 3



Drill the unused threads inside the trunk lid with a 8mm bit.

Step 4



Fit the big reinforcement plate inside the trunk lid.

Step 5



Use the OEM-screws at the given locations to fix the reinforcement plate.

Step 6



Drill the plastics trunk lid with a 7mm drill at the marked holes inside the reinforcement plate.



Step 7



Close the trunk and align the CNC-milled aluminum stands at the trunk lid. The holes drilled in Step 6 should match the holes in the aluminum part. Mark the position of the third hole.

Step 8



Drill a 7mm hole at the marked position.



Step 9



Use the three lens head screws per side (M6x20mm) to slightly mount the aluminum stands.

Step 10



Place the small reinforcement plates above the big ones (each per side).

Step 11

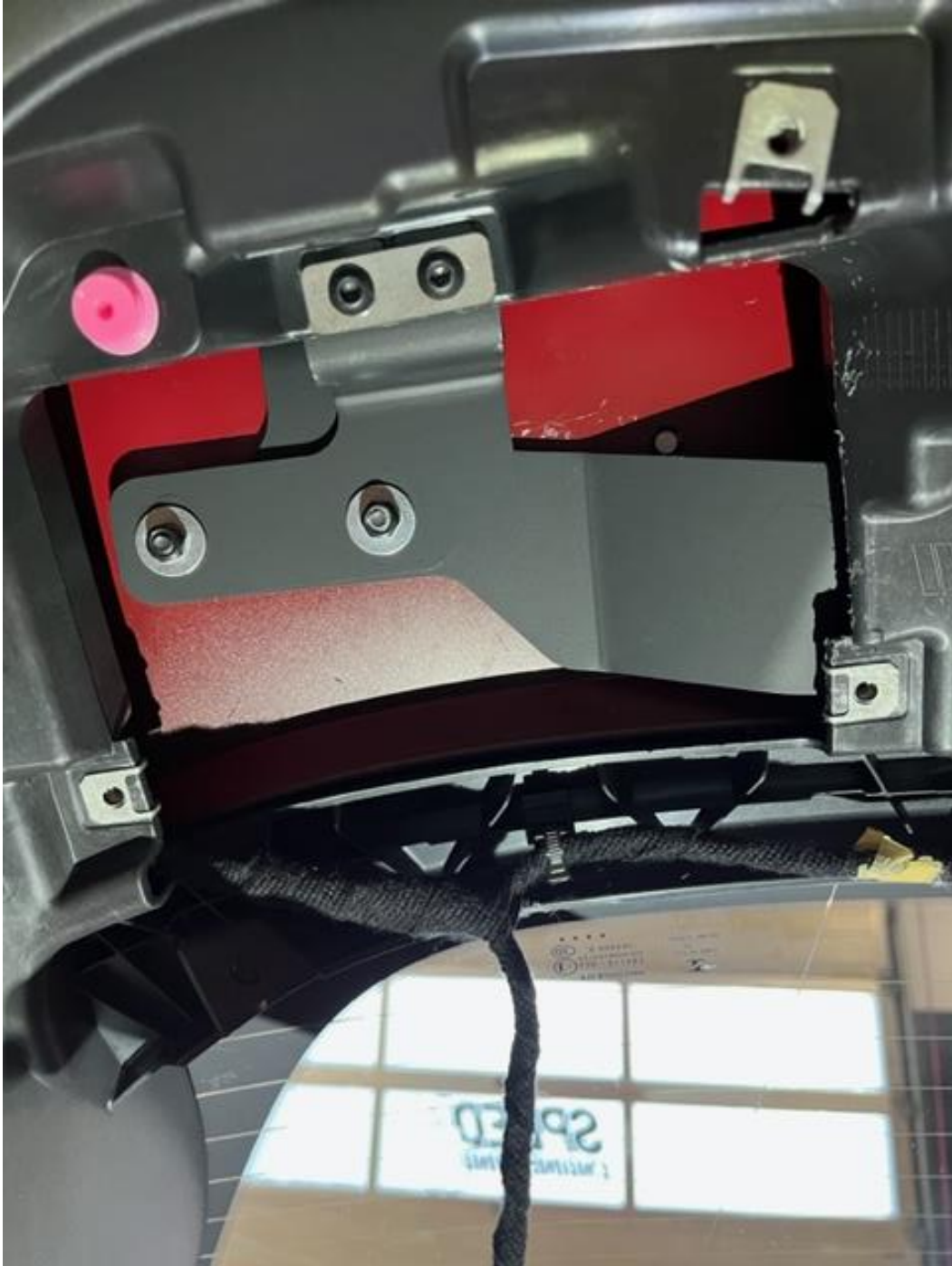




Mount the aluminum stands with the head screws, the locking nuts and the big washers from behind as shown in the pictures.



Step 12



Fill the remaining holes (two per side) of the small reinforcement plate with the M6x25 lens head screws and the square washers.

Step 13



Mount the electronics again. Use only two screws per side instead of four at the given mounting points.

Step 14



Reinstall the panel inside your trunk.

Step 15



Install the aluminum adapters at the wing with two M6x10 lens flange screws and two M6 sleeve nuts per side. (May see step 16 for the correct mounting.)

Step 16



Finally mount the swan neck wing with the installed aluminum adapters at the aluminum stands on your trunk lid. Use the remaining M6 lens flange screws and the M6 sleeve nuts again.

Done!

We hope you enjoy your SPEED Engineering product.

