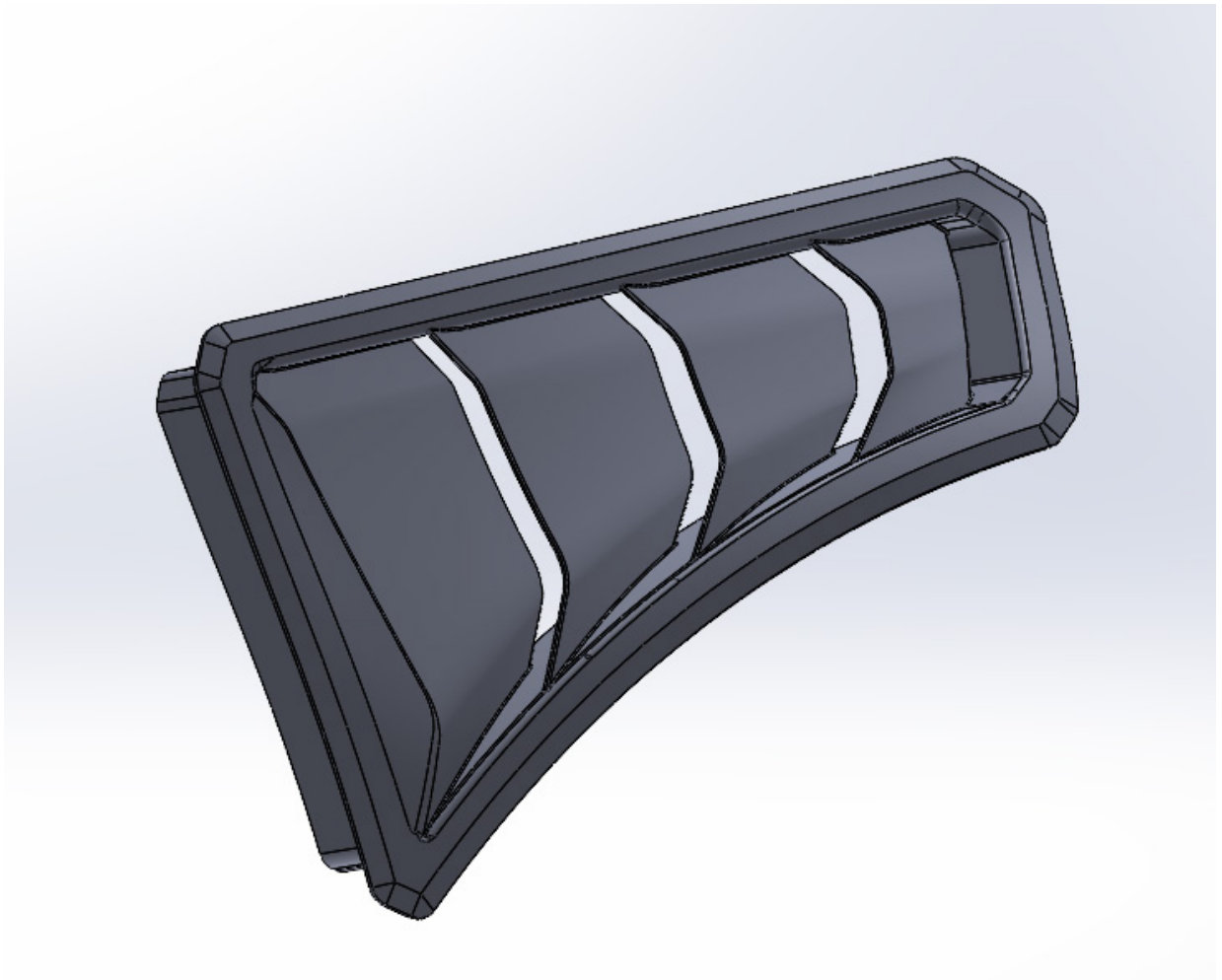


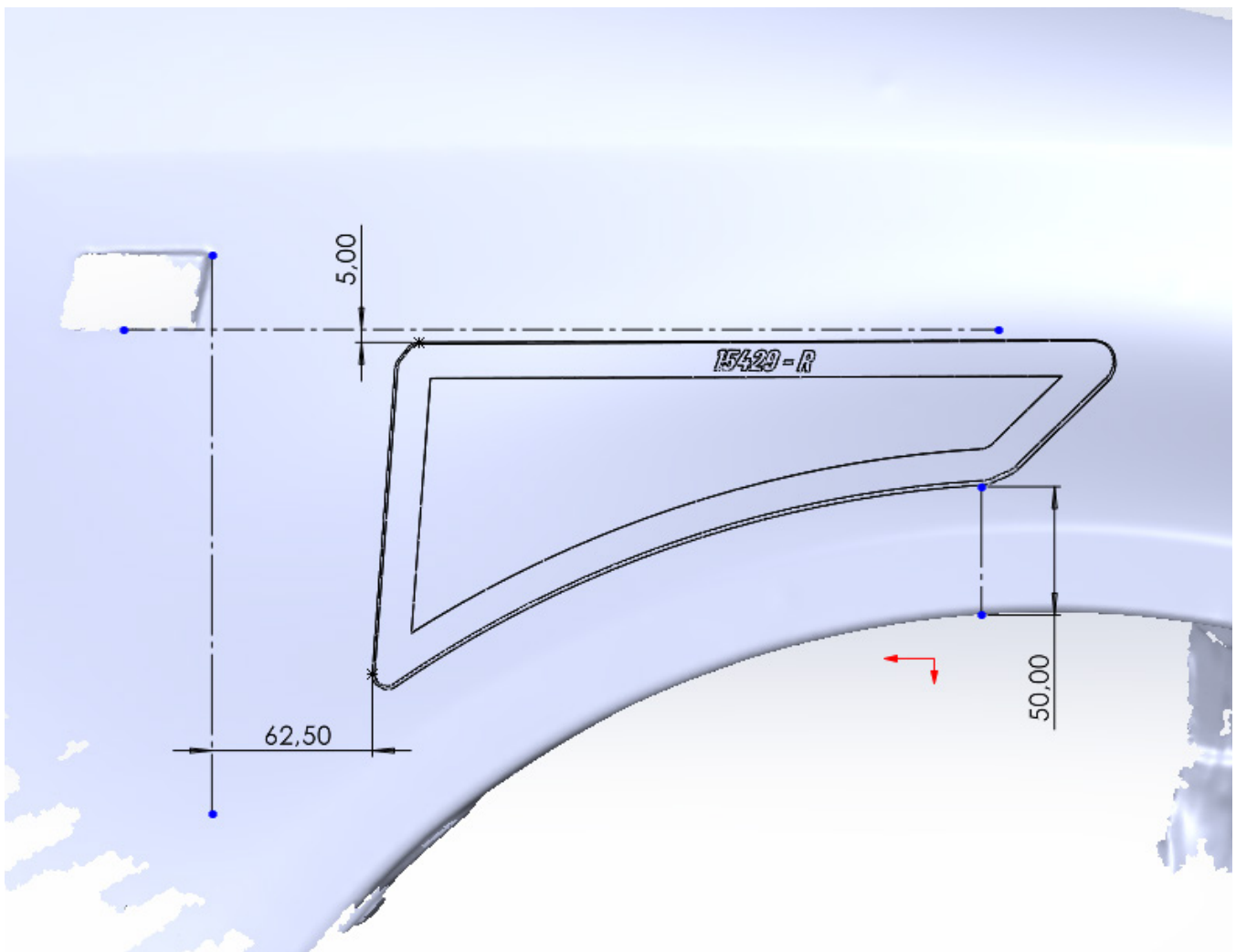
wheel vent

Installation instructions



The installation

1. place the template on the vehicle as shown and then draw around the outside of the template.
2. cut along the line
3. adjust the wheel arch liner so that you have as large an opening as possible
4. finally, clean the surface and attach the part with adhesives





**Speed Engineering GmbH
Kupferstraße 7
44577 Castrop-Rauxel
info@speedengineering.de**

WWW.SPEEDENGINEERING.DE